



Introducing the ALL-NEW

JTRAK

TENT TRAILER



DESIGNED FOR AUSTRALIA

JTRAK has been designed with avid campers in mind. The quick and easy set-up is the key feature of Jayco’s first tent trailer, along with an inflatable annex option, exclusive to Jayco.

JTRAK is the first Jayco product to showcase the new generation of Jayco chassis with JTech 2.0 suspension. JTech 2.0 is designed specifically for off-road adventures which means you can venture further with confidence. Choose from four JTRAK models to suit you, your family and your mates.

QUICK AND EASY SET-UP

WIND DOWN THE STABILISING LEGS AND UNCLIP THE TOUGH-LOCK LATCHES

1



HOOK THE WINCH* AND WIND THE HARD LID WHILE THE TENT SECTION UNFOLDS ITSELF

2



PUSH THE BED END POLES INTO PLACE ON THE INSIDE OF THE JTRAK AND START YOUR ADVENTURE

3



*Winch not available on touring model

200,000+ UNITS BOUGHT, SOLD & SUPPORTED
BY AUSTRALIA'S LARGEST MANUFACTURER

No. 1-selling RV brand in Australia

Designed and made in Australia

2-year manufacturer's warranty*
5-year structural warranty*

Over 100 service agents nationwide

43-years' experience in RV manufacturing

JAYCO.COM.AU | 1300 JAYCO RV

Jayco Corporation owns the copyright in this brochure. Unauthorised use, reproduction or adaptation is forbidden and will be prosecuted. Due to ongoing improvement, the specifications in this brochure are subject to change without notice. ©JAYCO 2018 PO Box 636 Dandenong VIC Australia 3175.

*Terms & conditions available at jayco.com.au

AUSTRALIAN MADE



Like all Jayco products, the JTRAK tent trailer proudly holds the Australian Made logo, certifying it as genuine Aussie-made, helping sustain Australian jobs and ensuring the best quality.



Purpose built for the rugged Australian conditions, the all-new JTRAK tent trailer is manufactured in Jayco’s world-class manufacturing plant in Dandenong, Victoria.

Every aspect of the JTRAK tent trailer is engineered and validated by the Victoria-based Jayco Research and Design team. All JTRAK parts are processed, quality-approved and assembled into finished product at the Jayco manufacturing plant.



The chassis, suspension, internal furniture and upholstery are produced in Jayco’s manufacturing plant. To support Australian manufacturers, JTRAK electricals, decals and the tent are sourced locally.

As part of the Jayco Testing Program, JTRAK has undergone weeks of testing on the same ground where major automotive and truck manufacturers, and suppliers to the Australian Defence Force test their vehicles.



THE DIFFERENCE IS IN THE DETAILS



Tent section - 10 oz double-stitched, heavy-duty Australian canvas



Dinette seating with durable designer fabric



Euro-style furniture with aluminium corners & seat framing



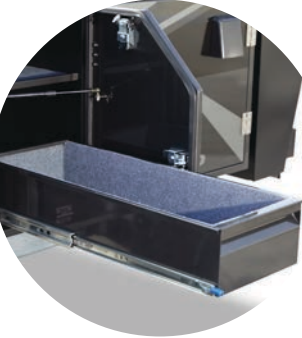
Hot-dip-galvanised wall construction



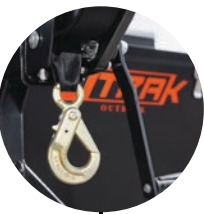
Water 12 v pump to sink



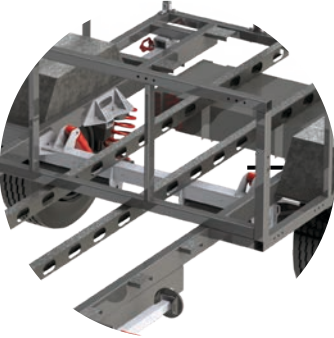
Battery - 100 amp deep cycle



Large storage box with heavy-duty seals and slide-out trays



Front and rear winch



Hot-dip-galvanised chassis



JTECH 2.0 Independent Coil Suspension



OBX model shown. Features shown may be optional extras and are model dependent.



Quick & easy set up



EXCLUSIVE TO JAYCO:
Inflatable annex



Over 100 service agents nationwide



2-Year manufacturer's + 5-Year structural warranty*

JTRAK FEATURES

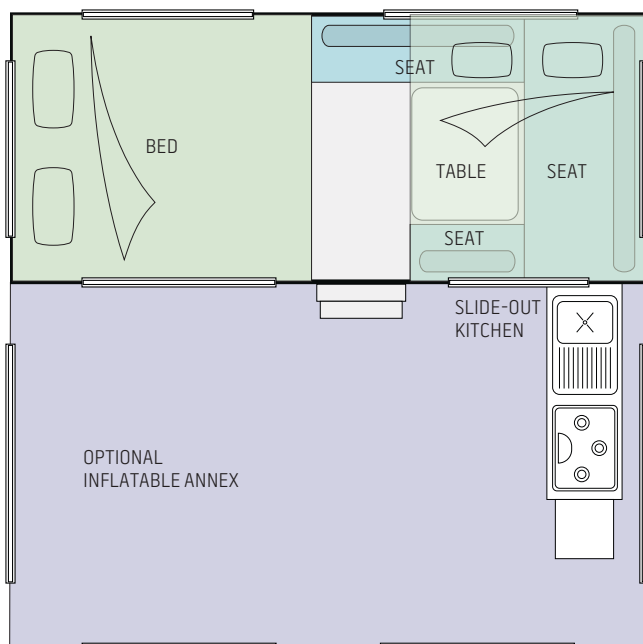
TR TRX OB OBX

Appliances				
Cooktop - 3-burner to external kitchen (with flame failure device)	●	●	●	●
Comfort				
Dinette seating with durable designer fabric	●	●	●	●
Mattress - innerspring	○	○	○	○
Seat foam - highly resilient with antibacterial finish	●	●	●	●
Construction				
Chassis 2.0 - main members 4" x 2"	●	●	●	●
Chassis 2.0 - streamline hot-dip-galvanised	●	●	●	●
Furniture - Euro-style with aluminium corners & seat framing	●	●	●	●
Walls - hot-dip-galvanised construction	●	●	●	●
Walls - smooth skin gunmetal grey clad	●	●	●	●
Exterior General				
Anderson plug to A-frame	●	●	●	●
Boot - front compartment	—	—	●	●
Coupling - 50 mm ball	●	●	—	—
Coupling - shock-proof swivel	—	—	●	●
Fridge compartment to main storage box with slide	●	●	●	●
Gas bayonet x 2	●	●	●	●
Gas bottle 9 kg (2 x 9 kg to Outback)	●	●	●	●
Inflatable annex with built-in LED lights	○	○	○	○
Jacks - corner supports AL-KO drop	●	●	●	●
Jerry can holder (2 x on Outback)	●	●	●	●
Jockey wheel	●	●	●	●
Mudflaps - Jayco	●	●	●	●
Plug car 7-pin	●	●	●	●
Power - 3 x 12 v sockets and 2 x USB ports	●	●	●	●
Roof rack	—	—	—	●
Sink with cold water tap	●	●	●	●

- Standard
- Optional
- Not available

TR TRX OB OBX

Solar wiring provision	—	—	●	●
Storage box - Large with heavy-duty seals and slide-out trays	—	—	●	●
Storage box - Small with heavy-duty seals and slide-out trays	●	●	—	—
Tap - 12 v pump to sink	—	●	●	●
Tap - mains pressure to sink	●	—	—	—
Tent section - 10 oz double-stitched, heavy-duty Australian canvas	●	●	●	●
Water filler - lockable	—	●	●	●
Water tank - 1 x 65 l under floor with guard	—	●	●	—
Water tank - additional 65 l with guard	—	—	—	●
Wheels - 14" 185/70R14 with single spare	●	●	—	—
Wheels - 15" 235/70R15 with single spare	—	—	●	—
Wheels - 16" 245/70R16 with dual spares	—	—	—	●
Wheels - nitrogen-filled	●	●	●	●
Interior General				
Battery - 100 amp deep cycle	—	●	●	—
Battery - 12 v/240 v management system with inverter	●	●	●	●
Battery - 2 x 100 amp deep cycle	—	—	—	●
Bed converter	●	●	●	●
Control panel - switches	●	●	●	●
Control panel - water and battery gauge	—	●	●	●
Lights - ceiling 12 v LED	●	●	●	●
Safety				
Brakes - electric	●	●	●	●
Suspension - axle & leaf springs	●	●	—	—
Suspension - JTECH 2.0 Independent Coil Suspension	—	—	●	●
Winch - front	—	●	●	●
Winch - rear	—	●	●	●



TR TRX OB OBX

Body (L) (mm)	4800	4800	5100	5250
Body (W) (mm)	1900	1900	1900	2015
Front bed (W) (mm)	1600	1600	1600	1600
Rear bed (W) (mm)	1940	1940	1940	1940
Open (L) (mm)	4800	4800	5100	5250

SINGLE AXLE TR TRX OB OBX

Tare weight (kg)	950	1015	1200	1400
Tow ball (kg)	105	130	170	170
Travel (L) (mm)	4800	4800	5100	5250
Travel (H) (mm)	1450	1450	1500	1500
Interior (H) (mm)	2300	2300	2300	2300

