



# CAMPER TRAILER

2017







## WHERE MOMENTS BECOME MEMORIES

Because every family is different, there's a choice of seven floor plans. The smallest sleeps three, while the largest accommodates as many as eight. Each is lightweight for easy towing by a wide range of vehicles, compact for convenient storage in your garage, carport or backyard, and each is offered in an Outback version suitable for venturing cross-country.

Holidays should be a simple and relaxing affair for the whole family. Jayco Camper Trailers are easy to tow, quick to setup and spacious to live in, making them a perfect way to achieve your dream RV escape with ease.

Like every Jayco, our Camper Trailers are designed for comfort, built to last, and equipped for effortless enjoyment. Setting up on arrival is a breeze. With the help of our patented roof lifter system, a couple of minutes is all it takes.



Optional equipment shown

-   
**NATIONWIDE SUPPORT**  
 100+ SERVICE AND DEALER LOCATIONS
-   
**ROADSIDE ASSIST**  
 3 YEARS 24 HOURS 365 DAYS
-   
**WARRANTY PROGRAM**  
 12 MONTHS' COMPREHENSIVE COVERAGE
-   
**BETTER VALUE**  
 MORE FEATURES FOR LESS
-   
**GREAT RESALE VALUE**  
 A SMARTER INVESTMENT IN THE LONG RUN



## EVERYTHING IS EASIER WHEN YOU HOLIDAY THE JAYCO WAY

Our Camper Trailers don't just make getting there easy – top to bottom, inside and out, every detail of a Jayco is designed to make all aspects of your holidays easier, more comfortable and more enjoyable for every family member.

That's the difference our four decades of local design and manufacturing experience makes. We understand that you want to tow small, but live large, with ample space for relaxing, innerspring mattresses for a restful sleep, quality appliances for cooking, and enough storage to carry your essentials. So that's what we give you – including a large, five-foot wide parents' bed with most floor plans.

We also appreciate you may want to personalise your Jayco. Not just through your preferred choice of fabrics and finishes, but with accessories relevant to your favourite leisure activities. Like a roof rack for the family tinnie, bike racks, or an awning for all-weather outdoor entertaining.

**01** Dinette seating with durable designer fabric. **02** Plenty of cupboard space. **03** Ample fridge/freezer space. **04** Combination fan and 12 volt light for bed time reading. **05** Four-burner cooktop (three gas, one electric) with flame failure protection and oven. **06** Large stainless steel bowl sink with Chop 'n' Serve board. **07** Rear bed restraints to help young children sleep safely.



### QUICK AND EASY SETUP

Once you arrive, it takes no time at all to set up your Camper Trailer, so you can start enjoying your time away sooner.

- 1 Unclip the corner roof latches
- 2 Use the fully enclosed winder system to raise the roof
- 3 With the roof raised, slide both bed ends out
- 4 Place the external supports under each bed end
- 5 Fold down the upper section of the stowable split door and connect with the lower section
- 6 Hinge each end frame up and slide the internal support pole into place



## JAYCO OUTBACK

Some of Australia's must-see destinations – the places you really want to explore – lie well beyond the bitumen. To help you see them, with all the comforts of home, each Jayco Camper Trailer is also available in an Outback version, complete with a higher ground clearance, and a range of high-strength componentry and specialised features, including:

- JTECH Independent Suspension
- 100AH battery
- Rectangular hollow section galvanised bumper bar
- 150mm x 50mm rectangular hollow section chassis members
- 125mm x 50mm rectangular hollow section A-frame
- Jerry can holder on 'A-frame (jerry can not included)
- AL-KO off-road electric brake magnets
- AL-KO outback drop jacks
- Protective aluminium checker plate on sides

- 15-inch alloy wheels with 235/75R15 tyres
- Vinyl spare wheel cover
- Pull-out double step
- External 12V auxiliary plug
- External gas bayonet
- Jayco mud flaps
- Solar provision

Opting for a Jayco Outback version is not a licence to bush bash. But its extra strength and enhanced specifications will free you to travel the country's unsealed roads safely and arrive relaxed. Even so, always take extra care and reduce your speed, especially when driving in unfamiliar territory. If in doubt, do what the 4WD experts do – use your Jayco as a base station and head into rougher terrain without anything in tow.



## JTECH SUSPENSION

Purpose designed to complement the Jayco Endurance Chassis, JTECH Suspension replaces beam axles with individual stub axles, allowing each wheel to react independently to the road surface, while also lessening the chassis' unsprung weight. Delivering greater stability, a smoother ride, more precise handling and increased ground clearance without increased ride height, it makes towing easier and safer than ever before.

Precision manufactured using automotive processes to ensure exact fitment, JTECH Suspension is the product of two years' research and development at Jayco's Melbourne headquarters, and countless kilometres of real world testing across the best and worst of Australian second class roads. Its features include:

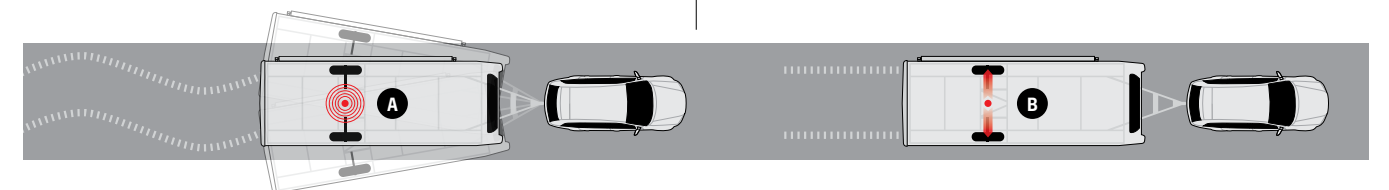
- Electrocoated surfaces for optimum protection against corrosion and stone chips
- AL-KO stub axles, bearings and brakes that are suitable for fitment of AL-KO Electronic Stability Control
- Large diameter, heavy-duty Pedders off-road shock absorbers and coil springs designed specifically for Jayco RVs and Australian conditions
- Aeon rubber springs inside each coil spring, producing a progressing rate when the suspension is compressed; and
- Toe-in and toe-out adjustment for wheel alignment



### SAFETY FIRST, WITH OPTIONAL AL-KO ELECTRONIC STABILITY CONTROL



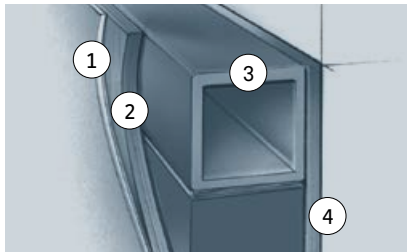
- A** Critical swerve or sway is detected.
- B** Electronic Stability Control partially applies the RV brakes. The caravan is pulled into line behind the tow vehicle. The sway is stopped and the caravan brakes are released.





## THE JAYCO QUAD-LAYER MAXIFRAME

Our Camper Trailers are built with the Jayco Maxiframe. This quad-layer wall construction technology is both stronger and lighter than those of conventional 'timber & tin' aluminium clad RVs.



- 1 Hail and dent resistant fibreglass exterior with a high gloss, gel coat finish
- 2 External 3mm plywood board to increase structural strength
- 3 42mm interlocking aluminium frame – not timber – for extra strength and longevity
- 4 Internal 3mm plywood board, CE coated for maximum durability



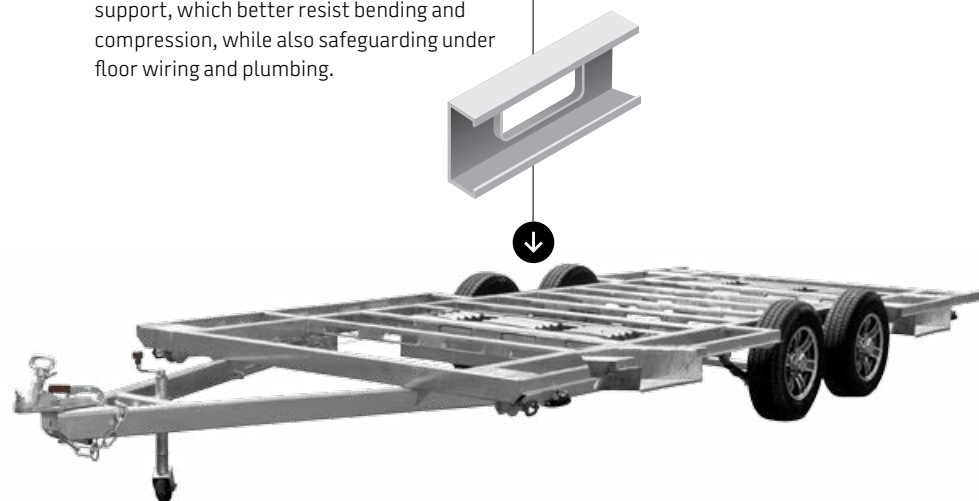
- 5 Patented roof lifter system with lifetime winch warranty to original owner
- 6 Double-stitched tent section
- 7 In-built annexe track
- 8 One-piece fibreglass roof



## ENDURANCE CHASSIS

A Camper Trailer is only as strong as the base on which it's built, so we build our Endurance Chassis to last like no other. Lightweight yet super strong, it's hot dip galvanised for lifelong protection against corrosion, and features PSC member floor support, which better resist bending and compression, while also safeguarding under floor wiring and plumbing.

**Jayco Pressed Steel C-Section (PSC)**  
PSC floor members are lighter than conventional box section steel, 300% stronger and resist bending by 175%.



## JAYCO OPTIONS ADD THAT PERSONAL TOUCH

It's through individual touches that the Jayco you choose becomes your own truly personal, home away from home. That's why we complement our range of feature packed floor plans with a selection of high quality optional extras – all of them designed to integrate seamlessly with your Jayco, operate effortlessly, and look fabulous. Here are just a few:

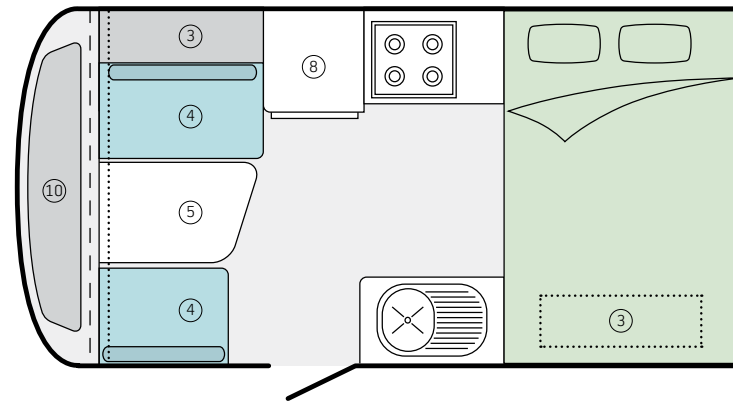
- 01 Add an outdoor room the easy way with a bag awning and walls
- 02 Versatile roof racks let you carry a range of additional cargo
- 03 An external shower, including pop up shower tents, helps keep dirt and sand outside, where it belongs
- 04 A high quality Fiamma awning makes every spot, a shady spot (N/A Swift)
- 05 Bag flies keep bed ends shaded and more private
- 06 Have power to spare with the 120 watt solar system and regulator
- 07 CD/radio stereo system includes both indoor and outdoor speakers
- 08 Roof-mounted air conditioning to keep you cool throughout summer
- 09 Catch your favourite shows on the 19.5" 12 volt LED TV with DVD player
- 10 Check water and battery levels at a glance with the Coast to Coast control panel
- 11 With a slide out BBQ you can entertain while you cook (select models only)



## FLOOR PLANS

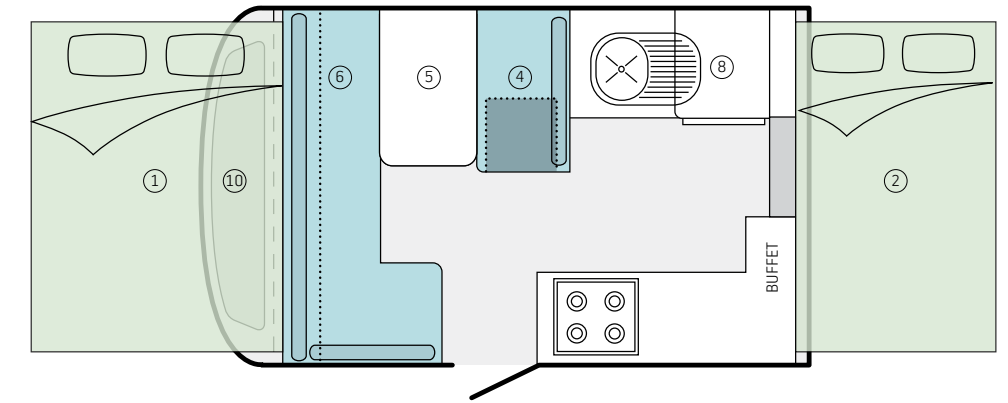
### PENGUIN

	SINGLE AXLE	TOURING	OB OUTBACK
Body (L) (mm)	4,340	Tare weight (kg) 960	1,185
Body (W) (mm)	2,240	Tow ball (kg) 112	132
Front bed (W) (mm)	1,310	Travel (L) (mm) 5,365	5,365
Rear bed (W) (mm)	-	Travel (H) (mm) 1,660	1,660
Open (L) (mm)	5,365	Interior (H) (mm) 2,070	2,070



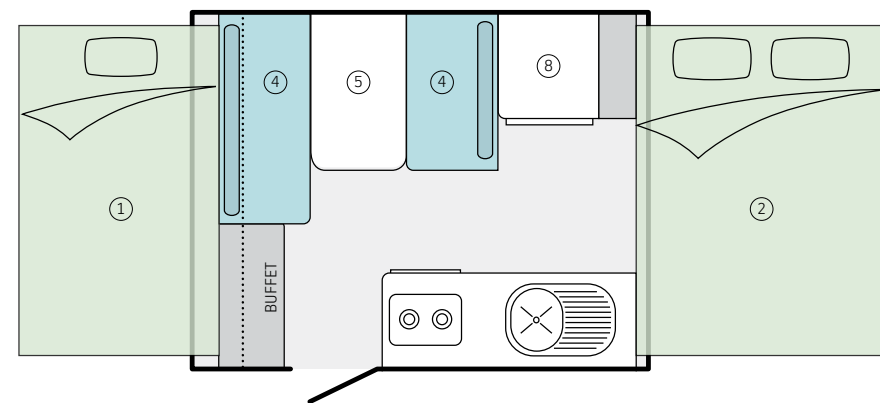
### DOVE

	SINGLE AXLE	TOURING	OB OUTBACK
Body (L) (mm)	3,750	Tare weight (kg) 970	1,195
Body (W) (mm)	2,240	Tow ball (kg) 128	155
Front bed (W) (mm)	1,460	Travel (L) (mm) 4,770	4,770
Rear bed (W) (mm)	1,140	Travel (H) (mm) 1,660	1,660
Open (L) (mm)	5,810	Interior (H) (mm) 2,070	2,070



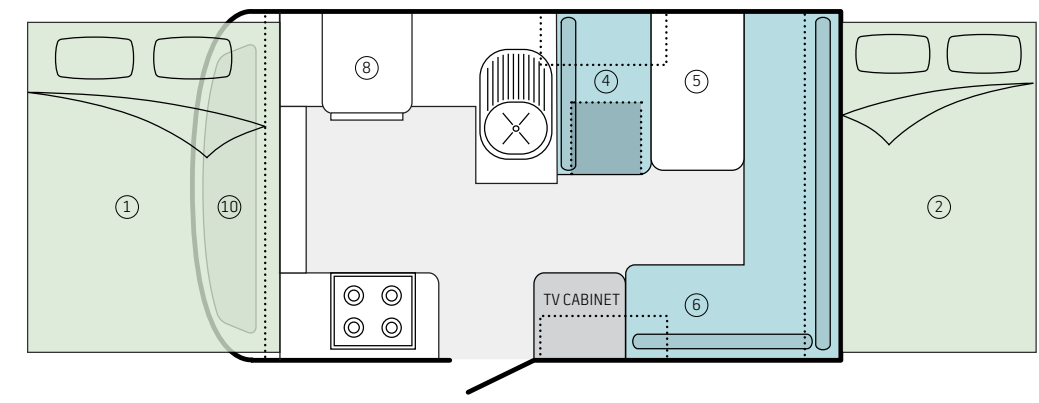
### SWIFT

	SINGLE AXLE	TOURING	OB OUTBACK
Body (L) (mm)	2,790	Tare weight (kg) 812	1,080
Body (W) (mm)	2,240	Tow ball (kg) 62	93
Front bed (W) (mm)	1,310	Travel (L) (mm) 4,140	4,140
Rear bed (W) (mm)	940	Travel (H) (mm) 1,660	1,660
Open (L) (mm)	4,980	Interior (H) (mm) 2,070	2,070



### HAWK

	SINGLE AXLE	TOURING	OB OUTBACK
Body (L) (mm)	4,040	Tare weight (kg) 997	1,237
Body (W) (mm)	2,240	Tow ball (kg) 121	141
Front bed (W) (mm)	1,460	Travel (L) (mm) 5,060	5,060
Rear bed (W) (mm)	1,140	Travel (H) (mm) 1,660	1,660
Open (L) (mm)	6,200	Interior (H) (mm) 2,070	2,070



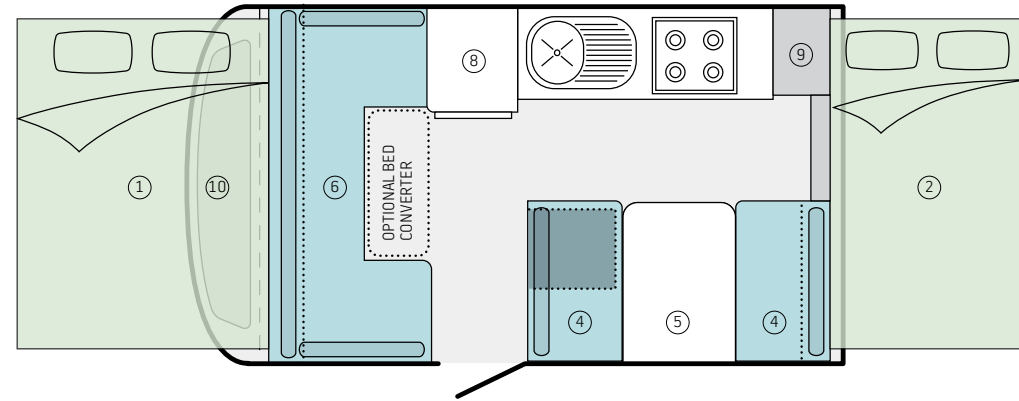
<b>Key</b>	1. Extending lift-up bed	4. Seat	7. Microwave	10. Storage	13. Washing machine
	2. Extending slide-out bed	5. Table	8. Fridge	11. Robe	
	3. Overhead storage	6. Club Lounge	9. Pantry	12. Front boot	

The tow ball and tare weights are only a guide and will change depending on accessories that are fitted to your van. It is advisable to discuss this with your Jayco Representative. Jayco allow an amount of additional weight (Carrying Load) for each individual unit manufactured above the initial manufactured Tare Weight of the unit. This 'Carrying Load' is for the customers individual weight requirements and can be made up of 'any' additional weight they propose to load the unit with, e.g. water, food, clothes etc. The standard unit approximate carrying loads Jayco apply are; Single Axle 300kg.

## FLOOR PLANS

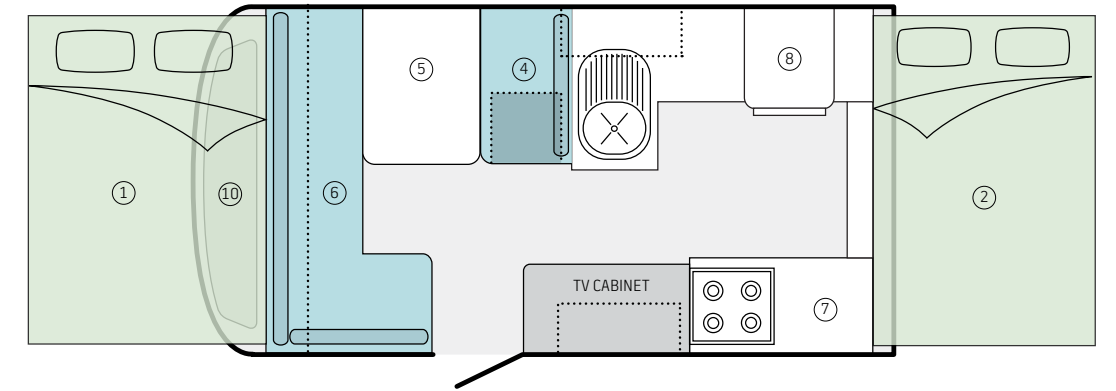
### EAGLE

	SINGLE AXLE	TOURING	OB OUTBACK
Body (L) (mm)	4,040	Tare weight (kg) 983	1,220
Body (W) (mm)	2,240	Tow ball (kg) 115	145
Front bed (W) (mm)	1,460	Travel (L) (mm) 5,060	5,060
Rear bed (W) (mm)	1,140	Travel (H) (mm) 1,660	1,660
Open (L) (mm)	6,200	Interior (H) (mm) 2,070	2,070



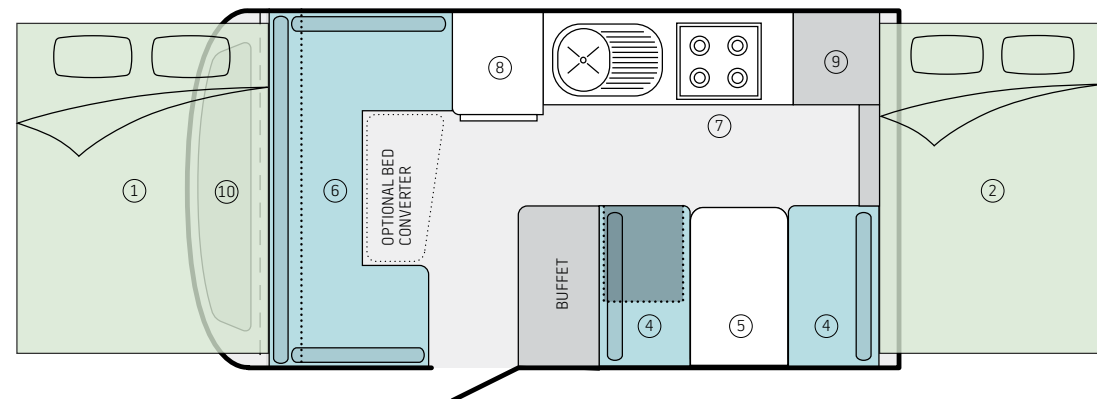
### FLAMINGO

	SINGLE AXLE	TOURING	OB OUTBACK
Body (L) (mm)	4,340	Tare weight (kg) 1,085	1,285
Body (W) (mm)	2,240	Tow ball (kg) 92	130
Front bed (W) (mm)	1,460	Travel (L) (mm) 5,365	5,365
Rear bed (W) (mm)	1,310	Travel (H) (mm) 1,660	1,660
Open (L) (mm)	6,505	Interior (H) (mm) 2,070	2,070



### SWAN

	SINGLE AXLE	TOURING	OB OUTBACK
Body (L) (mm)	4,340	Tare weight (kg) 1,097	1,300
Body (W) (mm)	2,240	Tow ball (kg) 105	130
Front bed (W) (mm)	1,460	Travel (L) (mm) 5,365	5,365
Rear bed (W) (mm)	1,310	Travel (H) (mm) 1,660	1,660
Open (L) (mm)	6,505	Interior (H) (mm) 2,070	2,070



<b>Key</b>	1. Extending lift-up bed	4. Seat	7. Microwave	10. Storage	13. Washing machine
	2. Extending slide-out bed	5. Table	8. Fridge	11. Robe	
	3. Overhead storage	6. Club Lounge	9. Pantry	12. Front boot	

The tow ball and tare weights are only a guide and will change depending on accessories that are fitted to your van. It is advisable to discuss this with your Jayco Representative. Jayco allow an amount of additional weight (Carrying Load) for each individual unit manufactured above the initial manufactured Tare Weight of the unit. This 'Carrying Load' is for the customers individual weight requirements and can be made up of 'any' additional weight they propose to load the unit with, e.g. water, food, clothes etc. The standard unit approximate carrying loads Jayco apply are; Single Axle 300kg.



## INTERIOR FEATURES

- Standard
- Optional
- Not available
- \* Selected layouts

	Touring	Outback		Touring	Outback
Battery – Setec 12V/240V management system	●	●	<b>Safety</b>		
Battery – 100amp deep cycle	○	●	Bed child restraints – rear bed	●	●
Bed converter – club lounge*	○	○	Brake magnets – off-road	-	●
Bed converter – dinette	●	●	Brakes – electric	●	●
Bed – front large parents' bed (1430mm wide)*	●	●	Cooktop flame failure device (N/A on Swift)	●	●
Control panel – Coast to Coast	○	○	ESC – AL-KO Electronic Stability Control device	○	○
Control panel – Drifter	○	○	eZylevel levelling device	○	○
Curtains – rubber backed removable & washable	●	●	Fire extinguisher	●	●
Drawers – Ezi glide pullout	●	●	Lights – side LED running	●	●
Floor vinyl – durable modern design	●	●	Roof switch – 12V power auto cutoff	●	●
Hatch roof 400mm x 400mm	●	●	Water filler – lockable	●	●
Lights – reading 12V & fan to bed ends (N/A on Penguin)	●	●			
Lights – ceiling 12V LED 2 tone	●	●			
Locks – positive to cupboard doors	●	●			
Power – 240V	●	●			
Privacy curtain to bed ends	●	●			
Sink – stainless steel large bowl with Chop 'n' Serve board	●	●			
Storage under seats	●	●			
Tap – hand pump to sink	●	●			
Tap – mains pressure to sink	●	●			
<b>Appliances</b>					
Air conditioning – roof mounted (Truma)	○	○			
Cooktop – 4 burner oven with 1 x 240V element (N/A on Swift, Dove & Penguin)	○	○			
Cooktop – Smev 4 burner grill with 1 x 240V hotplate (N/A on Swift)	●	●			
Cooktop – Spinflo 2 burner (Swift only)	●	●			
Fridge – Dometic RM2350 90L	●	●			
Hot water service – 22L dual gas/240V operation (N/A on Swift & Dove)	○	○			
Microwave* (Swan and Flamingo standard)	○	○			
Stereo – CD/radio system with external speakers	○	○			
TV aerial – 12V power boosted (N/A with roof racks)	○	○			
TV/DVD – Sphere LED 12V (19.5")	○	○			
<b>Comfort</b>					
Dinette seating with durable designer fabric	●	●			
Mattress – innerspring	●	●			
Seat Foam – high resilience & antibacterial	●	●			
Fitted bed sheets (Silver)	●	●			

Note that due to weight and space constraints, there may be a limit to additional options fitted to the roof. Please discuss with your Jayco sales consultant.

## EXTERIOR FEATURES

- Standard
- Optional
- Not available
- \* Selected layouts

	Touring	Outback		Touring	Outback
A-frame extended +300mm	-	○	Table – external foldout	○	○
Awning – Bag	○	○	Tap – mains pressure to A-frame	○	○
Awning – Fiamma (N/A Swift)	○	○	Tent design – coloured	-	●
Awning walls for Bag awning	○	○	Tent section – heavy duty canvas & Boltiflex	●	●
Bag Flies	○	○	Ventilation – tent windows flyscreens	●	●
BBQ – slideout (N/A on Swift)	○	○	Water tank – 82L under floor (75L on Swift OB & Dove OB)	●	●
Bed system – pullout	●	●	Water tank – additional 82L (N/A Swift)	○	○
Bike racks to roof racks	○	○	Water tank guard	●	●
Boot – front with large storage & gas strut assisted (N/A on Swift)	●	●	Wheel – alloy spare	●	●
Bumper bar (Swan & Flamingo)	●	-	Wheel – cover for spare	●	●
Bumper bar – RHS galvanised	-	●	Wheels – 16" 245/70R16	-	○
Checkerplate – protective black side bottom panels	-	●	Wheels – alloy with radial tyres (inches)	14	15
Coupling – shockproof swivel	-	○	Wheels – nitrogen filled	●	●
Door – external trunk (optional on Swift)	●	●	<b>Construction</b>		
Door main entrance – external 2 piece folding	●	●	Chassis – Endurance hot dipped galvanised	●	●
Front & rear ABS smooth modern styling (front on Swift)	●	●	Chassis – main members 4" x 2"	●	-
Gas bayonet	○	●	Chassis – main members 6" x 2"	-	●
Gas bottles – fixed 9kg (optional 2)	1	1	Furniture – Euro style with aluminium corner styles	●	●
Jack – for spare wheel	●	●	Furniture – Euro style with aluminium seat framing	●	●
Jacks – corner supports AL-KO drop	○	●	Roof – hail resistant one piece skin with sandwich insulation	●	●
Jacks – corner supports windown	●	-	Walls – Maxi Frame Ali stud construction	●	●
Jerry can holder	○	●	Walls – Skin Smooth hail & dent resistant fibreglass	●	●
Light – LED annexe	●	●			
Mudflaps – Jayco	○	●			
Pebbleguard stone protection at front	●	●			
Plug Car 12 Pin	●	●			
Power – 12V weather proof cig socket	○	●			
Power – 240V weather proof outlet	●	●			
Roof racks	○	○			
Shower – external (N/A on Swift & Dove)	○	○			
Solar system – 120 watt & regulator	○	○			
Solar system – 150 watt & regulator	○	○			
Solar wiring provision	●	●			
Step – double pull out	-	●			
Step – single pull out	●	-			
Suspension – axle & leaf springs	●	-			
Suspension – JTECH Suspension Independent Coil	-	●			



# TRIMS

The freedom you'll enjoy with your Jayco begins before you even place your order. We offer a wide range of great looking, hard-wearing, easy-to-clean finishes, fabrics and soft furnishings in both contemporary and classic styles, for you to choose and coordinate as you wish.

## Bolster/base cushion



Casablanca Dove / Obsession Warm Haze



Palm Leaf Shark / Eternal Bungee



Bubble / Eternal Bungee



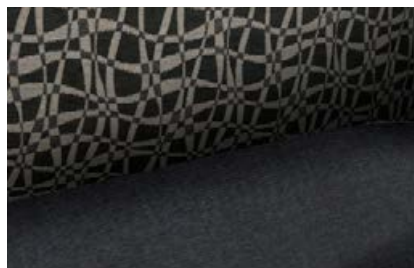
Thomas Eggplant / Aspire Eggplant



Kasual / Madrid



Eternal Bungee / Eternal Bungee



Eclipse / Bergen Noir



Arica / Zafira



Obsession Warm Haze / Obsession Warm Haze



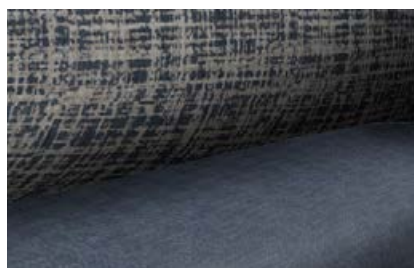
Bilson Granite / Byrne Granite



Scura Natural / Eternal Bungee



Aspire Eggplant / Aspire Eggplant



Letto / Metro Slate



Jacob Indigo / Ardo Denim



## Curtains



Elvis P

## Joinery/floor vinyl



Rovere joinery



Boston Dark floor vinyl

## Benchtop



Furlo (optional)



Talavera (optional)



## BUILT IN AUSTRALIA SINCE 1975 AND STILL GOING STRONG

Jayco RVs have been helping Australians live their holiday dreams for over 40 years. We began in 1975, in the garage of a suburban home; our ambition, to build a better Camper Trailer. Today, Jayco is the most popular brand on the market. We've built, sold and supported more than 180,000 RVs to date, and now operate a 20-hectare manufacturing facility in Melbourne that employs a local workforce of 1,000+ people.

From that first Camper, Jayco has made high-quality products that offer outstanding value for money and lasting peace of mind. It's an advantage we deliver more than ever now through increased manufacturing efficiencies; proprietary technology, such as JTECH SUSPENSION, the JAYCO MAXIFRAME and JAYCO ENDURANCE CHASSIS; and a commitment to using better materials, more precise craftsmanship, and ever-smarter design ideas and construction methods, for example:

- The **patented roof lifter system** minimises winding effort, eliminates slippage, maximises stability, is fully enclosed to prevent damage and comes with a lifetime warranty to the original owner (winch only)
- The tent section is made of high quality, **Australian-made canvas**, computer cut for accuracy and double-stitched for longevity
- The **one-piece fibreglass** roof is interlocked in position for added strength, and features protective corner moulds and extruded, powder-coated sidewalls with an in-built annex track
- Our Eurostyle aluminium framed furniture features **protective curved extrusions** for strength and elegance, positive cupboard catches to secure your valuables in transit, and cabinet fronts that are screwed into place, not stapled
- Cushions are made from **high-resilience** foam, for years of comfort and support, and upholstery is treated with **antimicrobial protection** to inhibit mould, mildew and fungi, as well as dust mite protection to help prevent asthma and allergy-related conditions
- Tyres are **inflated with nitrogen** – not everyday air – reducing fuel usage, tyre wear and the risk of blowouts, while also improving ride and handling.

### State of the art complex

Built in Australia since 1975 – and still going strong. In 2007, Jayco moved into its current 50-acre state of the art complex at 1 Jayco Drive, Dandenong South, Victoria, with a purpose-built 60,000sqm undercover manufacturing complex. This is where all Jayco RVs are made.

Australia's most recognised brand for quality and affordable recreational vehicles, Jayco is a great success story of Australian manufacturing.

Employing over 1,000 Australians, Jayco continues as a locally owned family business.



## CHOOSE JAYCO AND YOU'LL NEVER LOOK BACK

The freedom you experience when purchasing a Jayco extends beyond being able to travel where you want, when you want, for however long you want. There's also freedom from worry.

It comes from realising you've chosen the best value RV brand that money can buy, and that it will hold value better, for longer. It's also the peace of mind of knowing Jayco will always be there for you – through our comprehensive warranty, complimentary roadside assist service, or the convenience of Australia's largest RV dealer network.

Freedom from doubt, from second-guessing, from 'what if' – it's the feeling only an Australian-made Jayco can provide, and it's why our RVs are the first and only choice for so many.



### NATIONWIDE SUPPORT 100+ SERVICE AND DEALER LOCATIONS

With more than 100 approved service centres nationwide, the Jayco support network is easily the best and most comprehensive in Australia. No matter where the road takes you, the expertise or spare parts you need are never far away.



### 3 YEARS' ROADSIDE ASSIST 24 HOURS A DAY, 365 DAYS OF THE YEAR

Every new Jayco RV comes with one feature that no other RV manufacturer can match— complimentary 24-hour Roadside Assist for three full years. No matter where you travel in Australia, as a Jayco owner, you're only ever a phone call away from the help you need in the event of an on road emergency. Please refer to [jayco.com.au](http://jayco.com.au) for more information.



### WARRANTY PROGRAM 12 MONTHS' COMPREHENSIVE COVERAGE

The Jayco 12-month warranty is our promise that the RV you purchase will be free from poor workmanship and material defects. Regarded as the industry benchmark, it lets you relax on your travels, safe in the knowledge that Australia's largest RV dealer and service network has you covered.



### BETTER VALUE MORE FEATURES FOR LESS

Every model Jayco comes equipped with standard features that other brands offer only as options. Buying power is the key—nearly one in two RVs on Australian roads carries our name. We're also the nation's most efficient RV manufacturer. By passing on the benefits of these production advantages, we ensure Jayco remains Australia's best value for money RV.



### GREAT RESALE VALUE A SMARTER INVESTMENT IN THE LONG RUN

As you travel life's journey your needs may change. Your growing family may outgrow your current RV. Or you may retire and want to upgrade before embarking on the big trip you've always dreamed about. Whatever your reason for selling, you'll find a Jayco holds its value.



---

JAYCO.COM.AU 1300 JAYCO RV



To be the best, you need to work with the best



---

VISIT YOUR JAYCO DEALER:

