



REYNOLDS
CYCLING



2018 TECHNICAL SERVICE MANUAL

TABLE OF CONTENTS TECHNICAL SERVICE 2018

PAGE 3: REYNOLDS WHEEL GRAPHICS

PAGES 4 - 7: ROAD RZR AND ELEMENT CARBON

PAGES 8 - 11: ROAD AERO CARBON RIM BRAKE

PAGES 12 - 15: ROAD AERO CARBON DISC BRAKE

PAGES 16 - 19: ALLROADS RIM BRAKE CARBON

PAGES 20 - 25: ALLROADS DISC BRAKE CARBON

PAGES 26 - 45: MTN BLACK LABEL

REYNOLDS WHEEL GRAPHICS



RZR



AERO



ALLROADS RIM BRAKE



ALLROADS DISC



BLACKLABEL MTN



ELEMENT

REYNOLDS RZR CARBON ROAD WHEELS



RZR 46

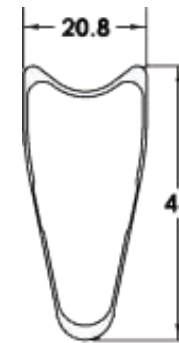


RZR 92

PLEASE NOTE:
11 SPEED UPGRADE KIT NOT AVAILABLE FOR 10
SPEED RZR REAR WHEELS. CONTACT REYNOLDS
FOR 11 SPEED CASSETTE OPTIONS.

RZR TUBULAR: 46T & 92T FULL CARBON ROAD

PART NO.	WHEEL DESCRIPTION	PART NO.	HUB COMPONENTS	QTY.
74001	WS, RZR 46T SHIMANO 11SPD 16/20H	FRONT HUB RZR		
73003	W, RZR 46T FRONT 16H	20173	BEARING, 6802, ABEC 5, 2RU	2
74004	W, RZR 46T SHIMANO 11SPD 20H	20197	WASHER, STAINLESS .015" TH RZR	11
		20737	SPACER, GREASE, RZR	2
73002	WS, RZR 46T CAMPY 11SPD 16/20H	20739	END CAP, FRONT, RZR	2
73003	W, RZR 46T FRONT 16H	20782	WASHER, SS THRUST (.003), RZR	2
73005	W, RZR 46T CAMPY 11SPD 20H	20866	AXLE, RZR FRONT ALUMINUM	1
74021	WS, RZR 92T SHIMANO 11SPD 16/20H	REAR HUB RZR SHIMANO 11		
73023	W, RZR 92T FRONT 16H	20173	BEARING, 6802, ABEC 5, 2RU	4
74024	W, RZR 92T SHIMANO 11SPD 20H	20197	WASHER, STAINLESS .015" TH RZR	7
		20737	SPACER, GREASE, RZR	1
73002	WS, RZR 92T CAMPY 11SPD 16/20H	20740	END CAP, REAR N-DRIVE SIDE, RZR	1
73023	W, RZR 92T FRONT 16H	20782	WASHER, SS THRUST (.003), RZR	1
73022	W, RZR 92T CAMPY 11SPD 20H	20785	END CAP, REAR DRIVE SIDE, RZR	1
		20868	AXLE, RZR CAMPY ALUMINUM	1
		20709	FREEHUB, SHIM RZR 11 SP	1
RZR ACCESSORIES		REAR HUB RZR CAMPY 11		
20898	SKEWER, RZR REAR	20173	BEARING, 6802, ABEC 5, 2RU	4
20899	SKEWER, RZR FRONT	20197	WASHER, STAINLESS .015" TH RZR	10
20797	BRAKE PAD, CRYO BL PWR SHIM 2PK	20737	SPACER, GREASE, RZR	1
20798	BRAKE PAD, CRYO BLU PWR CAMPY	20740	END CAP, REAR N-DRIVE SIDE, RZR	1
85112	WHEEL BAG SINGLE, REYNOLDS	20782	WASHER, SS THRUST (.003), RZR	1
20647	VALVE EXTENDER, 50MM STEM	20784	SPACER, AXLE CASS. CAMPY RZR	1
20912	VALVE HOLE PLUG, RZR 92T	20785	END CAP, REAR DRIVE SIDE, RZR	1
		20933	SPACER, DRIVE SIDE 0.1", RZR	1
		20868	AXLE, RZR CAMPY ALUMINUM	1
		20710	FREEHUB, CAMPY RZR 11 SP	1



RZR 46T



RZR 92T

REYNOLDS ELEMENT DISC WHEELS

PART NO.	WHEEL DESCRIPTION	
73601	W, ELEMENT TUBULAR DISC SHIMANO/SRAM 11SPD	
73602	W, ELEMENT TUBULAR DISC CAMPAGNOLO 11SPD	
73603	W, ELEMENT CLINCHER DISC SHIMANO/SRAM 11SPD	
73604	W, ELEMENT CLINCHER DISC CAMPAGNOLO 11SPD	
PART NO.	HUB COMPONENTS AND ACCESSORIES	QTY
21156	FREEHUB, ELEMENT DISC 9/10/11 SHIMANO	
20328	FREEHUB, ELEMENT DISC 9/10/11 CAMPY	
20647	VALVE EXTENDER, 50MM STEM	
21160	RIM STRIP, 18MM BLUE	
20816	SKEWER, FRONT UPPER LEVEL AERO	
20817	SKEWER, REAR UPPER LEVEL AERO	
20797	BRAKE PAD,CRYO BL PWR SHIM (2PK)	
20798	BRAKE PAD,CRYO BLU PWR CAMPY (2PK)	
20156	BEARING, 6902RS REAR HUB	4
85112	WHEEL BAG SINGLE, REYNOLDS	

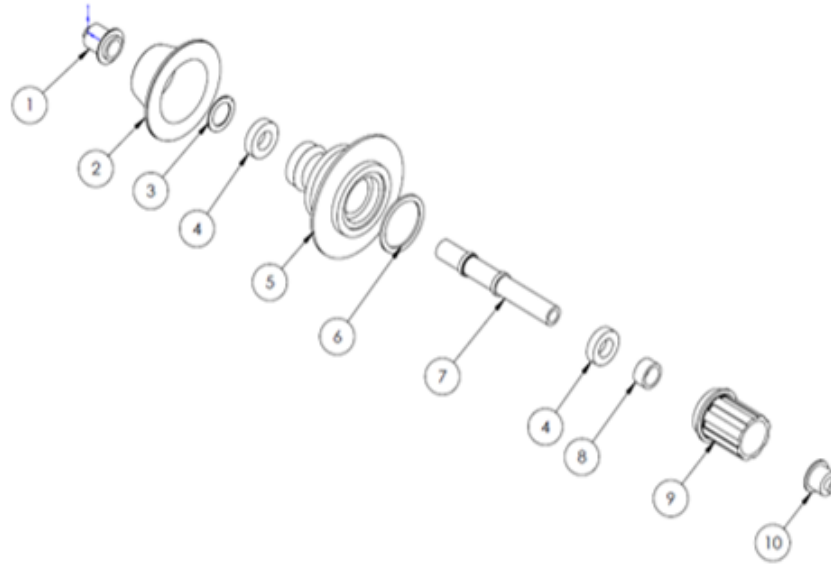


**ELEMENT CLINCHER
AND TUBULAR**

PLEASE NOTE:
11 SPEED UPGRADE KIT NOT AVAILABLE FOR 10
SPEED ELEMENT REAR WHEELS. CONTACT
REYNOLDS FOR 11 SPEED CASSETTE OPTIONS.

ELEMENT CARBON DISC REAR HUB

Element Disc Hub



Item	Description	QTY	Shimano	Campy
			Part No.	Part No.
1	End Cap (NDS)	1	-	-
2	Screw Off Shell	1	-	-
3	Seal	1	-	-
4	Bearing (6902RU)	2	20156	20156
5	Hub Shell	1	-	-
6	Rubber Seal	1	21156*	20328*
7	Axle	1	-	-
8	Spacer**	1	21156*	20328*
9	Freehub Body (Shimano)	1	21156*	20328*
10	End Cap (DS)	1	21156*	20328*

*Freehub Body Kit includes: Freehub Body (9), Spacer (8), DS End Cap (10), and Rubber Seal (6).

**Shimano Spacer = 10mm thick.
Campy Spacer = 4mm thick.

Hub Options		End Caps (DS only available in Freehub Kit)*	
Part No.	Description	Part No.	Description
20342	HUB, CHOSEN DISC SHIMANO 10SP	21156	FREEHUB, DISC 9/10/11 SHIMANO
20343	HUB, CHOSEN DISC SHIMANO 11SP	20328	FREEHUB, DISC 9/10/11 CAMPY
20326	HUB, CHOSEN DISC CAMPY 10SP		
20327	HUB, CHOSEN DISC CAMPY 11SP		

REYNOLDS AERO RIM BRAKE ROAD WHEELS



AERO 65

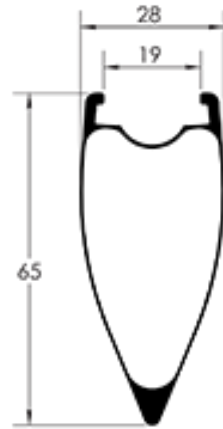


AERO 80

AERO 65 CLINCHER RIM BRAKE AERO ROAD

77681 WS, 65AERO C TL RB SHIM 18/24

77683	W, 65AERO C TL RB FRONT 18H	1
67683	D RIM, H ₂ O AERO 65 C TL RB 18H	1
20915	RIM TAPE, TL 22MM 5.5M	1
21862	HUB, LS9F RB SP FRNT QR 18H	1
21575	SPOKE, SPM CXRAY 260MM SP BLK	18
20911	NIPPLE, HEX HIDDEN INTERNAL	18
85585	W ACC KIT, 65 AERO TL RB FRNT	1
85112	WHEEL BAG SINGLE, REYNOLDS	1
20333	REYNOLDS NEW PROD WEBSITE CARD	1
21786	VALVE STEM, TUBELESS 85MM LONG	1
20816	SKEWER, QR FRONT UPPER LEVEL	1
21880	BRAKE PAD, CRYO PWR SHIM (PAIR)	1
77684	W, 65AERO C TL RB SHIM 24H	1
67684	D RIM, H ₂ O AERO 65 C TL RB 24H	1
20915	RIM TAPE, TL 22MM 5.5M	1
21863	HUB, AERO RB SP SHIM 24H	1
21576	SPOKE, SPM CX-RAY 267MM SP BLK	12
21584	SPOKE, SPM CX-RAY 265MM SP BLK	12
20911	NIPPLE, HEX HIDDEN INTERNAL	24
85586	W ACC KIT, 65 AERO TL RB REAR	1
20333	REYNOLDS NEW PROD WEBSITE CARD	1
21786	VALVE STEM, TUBELESS 85MM LONG	1
20817	SKEWER, QR REAR UPPER LEVEL	1
21880	BRAKE PAD, CRYO PWR SHIM (PAIR)	1
85112	WHEEL BAG SINGLE, REYNOLDS	1



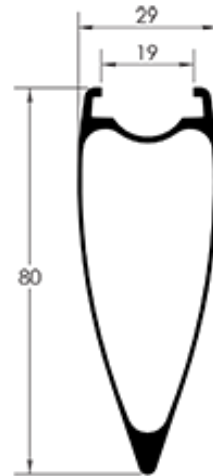
FREEHUB OPTIONS

- 21857 FREEHUB, AERO RB/DB XD 11 SPD
- 21858 FREEHUB, AERO RB/DB CAMPY 11 SPD



AERO 80 CLINCHER RIM BRAKE AERO ROAD

77851	WS, 80AERO C TL RB SHIM 18/24	
77853	W, 80AERO C TL RB FRONT 18H	1
67853	D RIM, H ₂ O AERO 80 C TL RB 18H	1
20915	RIM TAPE, TL 22MM 5.5M	1
21862	HUB, FRONT AERO RB SP 18H	1
21582	SPOKE, SPM CX-RAY 246MM SP BLK	18
20911	NIPPLE, HEX HIDDEN INTERNAL	18
85587	W ACC KIT, 80 AERO TL RB FRNT	1
85112	WHEEL BAG SINGLE, REYNOLDS	1
20333	REYNOLDS NEW PROD WEBSITE CARD	1
21787	VALVE STEM,TUBELESS 100MM LONG	1
20816	SKEWER, QR FRONT UPPER LEVEL	1
21880	BRAKE PAD, CRYO PWR SHIM (PAIR)	1
77854	W, 80AERO C TL RB SHIM 24H	1
67854	D RIM, H ₂ O AERO 80 C TL RB 24H	1
20915	RIM TAPE, TL 22MM 5.5M	1
21863	HUB, AERO RB SHIM SP 24H	1
21583	SPOKE, SPM CX-RAY 253MM SP BLK	12
21588	SPOKE, SPM CXRAY 258MM SP BLK	12
20911	NIPPLE, HEX HIDDEN INTERNAL	24
85588	W ACC KIT, 80 AERO TL RB REAR	1
20333	REYNOLDS NEW PROD WEBSITE CARD	1
21787	VALVE STEM,TUBELESS 100MM LONG	1
20817	SKEWER, QR REAR UPPER LEVEL	1
21880	BRAKE PAD, CRYO PWR SHIM (PAIR)	1
85112	WHEEL BAG SINGLE, REYNOLDS	1



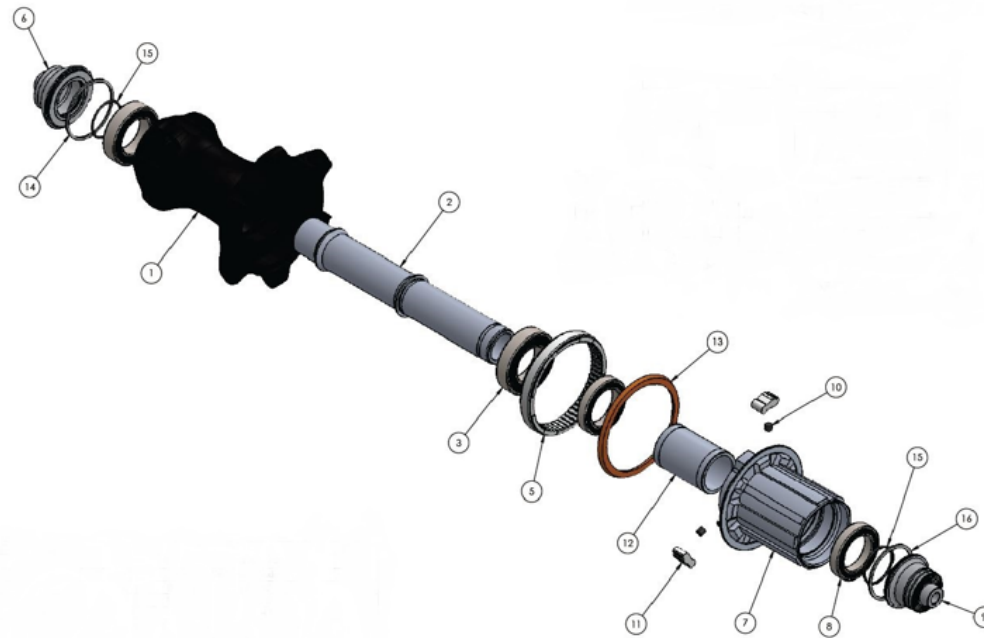
FREEHUB OPTIONS

- 21857 FREEHUB, AERO RB/DB XD 11 SPD
- 21858 FREEHUB, AERO RB/DB CAMPY 11 SPD



AERO RIM BRAKE REAR HUB

i9 Reynolds Rim Brake



Item	Description	QTY	XD	Shimano
			Part No.	Part No.
1	Hub shell	1	--	--
2	Axle, RB Rear	1	21792	21792
3	Bearing (6903)	1	20168	20168
4	Bearing (17x28x7)	1	20158	20158
5	Drive Ring	1	21771	21771
6	End Cap	1	21873	21873
7	Freehub	1	--	--
8	Bearing	2	20167	20167
9	End Cap	1	21873	21873
10	Pawl Spring	1	21847	21847
11	Pawl	1	21847	21847
12	Freehub Spacer	1	21793	21793
13	Seal	1	--	--
14	Seal	1	--	--
15	O-Ring	2	21852	21852
16	Seal	1	--	--

End Caps

Part No.	Description
21873	END CAP, i9 RB REAR QR 9x130

Freehub and Pawl Kits

Part No.	Description
21856	FREEHUB, i9 RB/DB SHIM 11 SPD
21857	FREEHUB, i9 RB/DB XD 11 SPD
21858	FREEHUB, i9 RB/DB CAMPY 11 SPD
21847	HUB i9 ROAD 3 PAWL SPRING KIT

REYNOLDS AERO ROAD DISC WHEELS



**AERO 46
DISC**

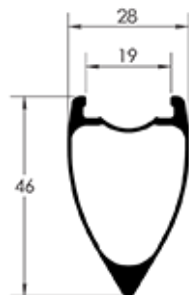


**AERO 65
DISC**

AERO 46 CLINCHER ROAD DISC

77341 WS, 46 AERO C TL DB SHIM 20/24

77343	W, 46 AERO C TL DB FRONT 20H	1
67343	D RIM, H ₂ O AERO 46 C TL DB 20H	1
20915	RIM TAPE, TL 22MM 5.5M	1
21860	HUB, AERO DB CL 12MM FRONT 20H	1
21533	SPOKE, SPM CX-RAY 290MM SP BLK	20
20911	NIPPLE, HEX HIDDEN INTERNAL	20
85581	W ACC KIT, 46 AERO TL DB FRNT	1
85112	WHEEL BAG SINGLE, REYNOLDS	1
20333	REYNOLDS NEW PROD WEBSITE CARD	1
21013	VALVE STEM, TUBELESS 75MM LONG	1
21287	LOCK RING, CENTER LOCK	1
21289	ADAPTER, CL TO IS6-BOLT	1
21869	END CAP, AERO DB FRT TA 15x100	1
77344	W, 46 AERO C TL DB SHIM 24H	1
67344	D RIM, H ₂ O AERO 46 C TL DB 24H	1
20915	RIM TAPE, TL 22MM 5.5M	1
21861	HUB, AERO DB CL 142/12 SHIM 24H	1
21605	SPOKE, SPM CX-RAY 285MM SP BLK	12
21593	SPOKE, SPM CX-RAY 280MM SP BLK	12
20911	NIPPLE, HEX HIDDEN INTERNAL	24
85582	W ACC KIT, 46 AERO TL DB REAR	1
20333	REYNOLDS NEW PROD WEBSITE CARD	1
21013	VALVE STEM, TUBELESS 75MM LONG	1
21287	LOCK RING, CENTER LOCK	1
21289	ADAPTER, CL TO IS6-BOLT	1
85112	WHEEL BAG SINGLE, REYNOLDS	1



END CAP AND FREEHUB OPTIONS

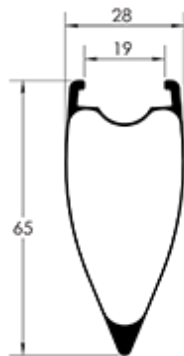
21857	FREEHUB, AERO RB/DB XD 11 SPD
21858	FREEHUB, AERO RB/DB CAMPY 11 SPD
21867	END CAP, AERO DB FRT QR 5x100
21869	END CAP, AERO DB FRT TA 15x100
21870	END CAP, AERO DB REAR QR 5x135
21872	END CAP, AERO DB REAR TA 12x135



AERO 65 CLINCHER ROAD DISC

77661 WS, 65AERO C TL DB SHIM 20/24

77663	W, 65AERO C TL DB FRONT 20H	1
67663	D RIM, H ₂ O AERO 65 C TL DB 20H	1
20915	RIM TAPE, TL 22MM 5.5M	1
21860	HUB, AERO DB CL SP FRNT 12MM 20H	1
21592	SPOKE, SPM CX-RAY 275MM SP BLK	10
20911	NIPPLE, HEX HIDDEN INTERNAL	20
85583	W ACC KIT, 65 AERO TL DB FRNT	1
85112	WHEEL BAG SINGLE, REYNOLDS	1
20333	REYNOLDS NEW PROD WEBSITE CARD	1
21786	VALVE STEM, TUBELESS 85MM LONG	1
21287	LOCK RING, CENTER LOCK	1
21289	ADAPTER, CL TO IS6-BOLT	1
21869	END CAP, AERO DB FRT TA 15x100	1
77664	W, 65AERO C TL DB SHIM 24H	1
67664	D RIM, H ₂ O AERO 65 C TL DB 24H	1
20915	RIM TAPE, TL 22MM 5.5M	1
21861	HUB, AERO DB CL SP SHIM 12X142MM 24H	1
21576	SPOKE, SPM CX-RAY 267MM SP BLK	12
21584	SPOKE, SPM CX-RAY 265MM SP BLK	12
20911	NIPPLE, HEX HIDDEN INTERNAL	24
85584	W ACC KIT, 65 AERO TL DB REAR	1
20333	REYNOLDS NEW PROD WEBSITE CARD	1
21786	VALVE STEM, TUBELESS 85MM LONG	1
21287	LOCK RING, CENTER LOCK	1
21289	ADAPTER, CL TO IS6-BOLT	1
85112	WHEEL BAG SINGLE, REYNOLDS	1



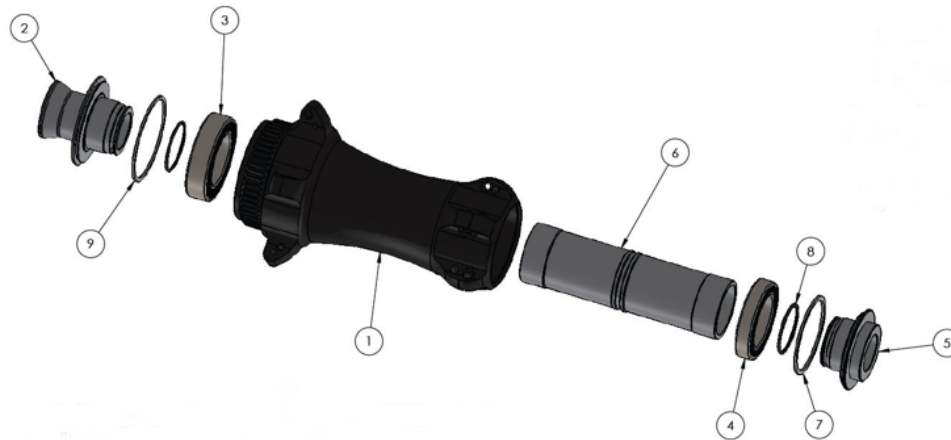
END CAP AND FREEHUB OPTIONS

21857	FREEHUB, AERO RB/DB XD 11 SPD
21858	FREEHUB, AERO RB/DB CAMPY 11 SPD
21867	END CAP, AERO DB FRT QR 5x100
21869	END CAP, AERO DB FRT TA 15x100
21870	END CAP, AERO DB REAR QR 5x135
21872	END CAP, AERO DB REAR TA 12x135



AERO ROAD DISC FRONT HUB

i9 Reynolds Road Disc 12x100mm



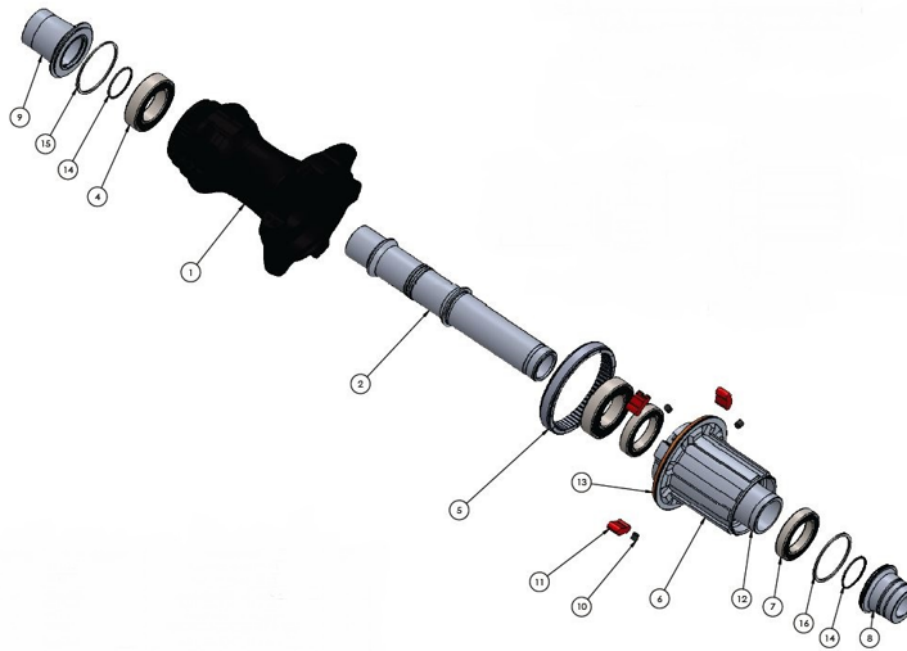
			Shimano
Item	Description	QTY	Part No.
1	Hub Shell	1	--
2	End Cap	1	--
3	Bearing (17287)	1	20158
4	Bearing (6803)	1	20171
5	End Cap	1	--
6	Axle	1	21784
7	Seal	1	--
8	O-Ring	2	--
9	Seal	1	--

End Caps

Part No.	Description
21868	END CAP, i9 DB FRT TA 12x100
21869	END CAP, i9 DB FRT TA 15x100
21867	END CAP, i9 DB FRT QR 9x100

AERO ROAD DISC REAR HUB

i9 Reynolds 12x142mm Road



Item	Description	QTY	XD	Shimano
			Part No.	Part No.
1	Hub shell	1	--	--
2	Axle, CL Rear	1	21971	21971
3	Bearing (17x30x7)	1		
4	Bearing (17x28x7)	1	20158	20158
5	Drive Ring	1	21771	21771
6	Freehub	1	21857	21856
7	Bearing (6803)	1	20171	20171
8	End Cap	1	--	--
9	End Cap	1	--	--
10	Pawl	1	21847	21847
11	Spring	1	21847	21847
12	Freehub Spacer	1	--	--
13	Freehub Seal	1	--	--
14	O-Ring	2	21852	21852
15	Seal	1	--	--

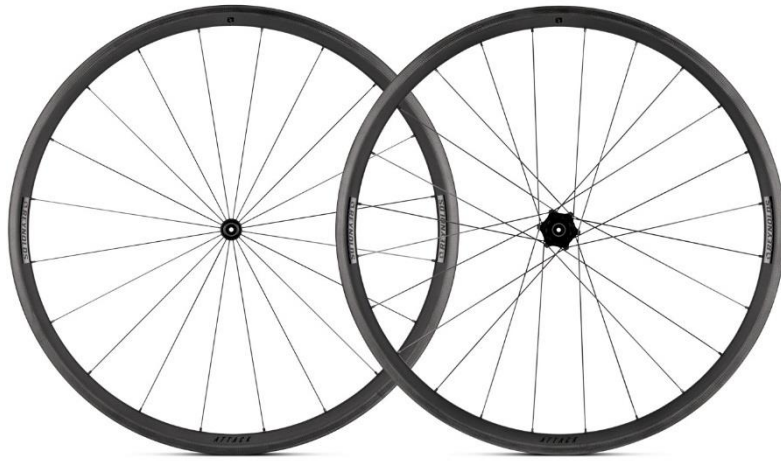
End Caps

Part No.	Description
21871	END CAP, i9 DB REAR TA 12x142
21872	END CAP, i9 DB REAR TA 12x135
21873	END CAP, i9 RB REAR QR 9x130

Freehub and Pawl Kits

Part No.	Description
21856	FREEHUB, i9 RB/DB SHIM 11 SPD
21857	FREEHUB, i9 RB/DB XD 11 SPD
21858	FREEHUB, i9 RB/DB CAMPY 11 SPD
21847	HUB i9 ROAD 3 PAWL SPRING KIT

ALLROADS RIM BRAKE



ATTACK



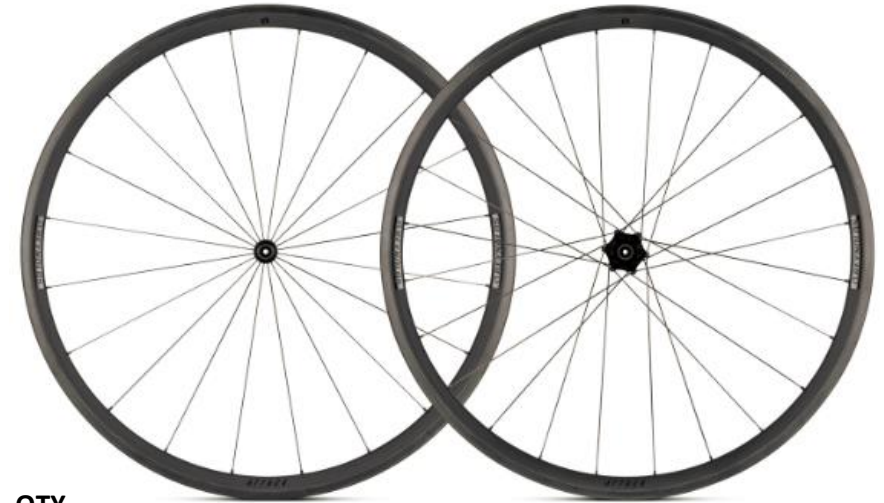
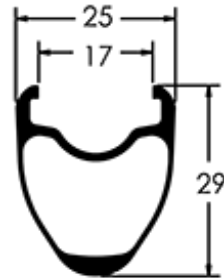
ASSAULT SLG



STRIKE SLG

ATTACK TUBELESS CLINCHER PERFORMANCE ROAD

77281	WS, ATTACK C TL RB SHIM 20/24	
77283	ATTACK C TL RB FRONT 20H	1
67283	D RIM, H ₂ O ATTACK C TL RB 20H	1
20918	RIM TAPE, TL 22MM 5.5M INSTALLED	1
22105	HUB, GW RB FRNT 5/100 20H	1
21558	SPOKE, SPM CXSPNT 284MM SP BLK	20
20311	NIPPLE, EXT BLACK ALLOY SQ HEAD	20
85410	W ACC KIT, ATTACK C RB TL F SHI	1
21011	VALVE STEM, TUBELESS 45MM LONG	1
21880	BRAKE PADS CRYO PWR SHIM (PAIR)	1
20813	FRONT SKEWER MID-LEVEL	1
77284	W, ATTACK C TL RB SHIM 24H	1
67284	D RIM, H ₂ O ATTACK C TL RB 24H	1
20918	RIM TAPE, TL 22MM 5.5M INSTALLED	1
22106	HUB, GW RB SHIM 5/130 24H	1
21665	SPOKE, SPM CXSPNT 290MM SP BLK	12
21563	SPOKE, SPM CXSPNT 292MM SP BLK	12
20311	NIPPLE, EXT BLACK ALLOY SQ HEAD	24
85589	W ACC KIT, ATTACK RB TL SHIM	1
21011	VALVE STEM, TUBELESS 45MM LONG	1
21880	BRAKE PADS CRYO PWR SHIM (PAIR)	1
20814	REAR SKEWER MID-LEVEL	1

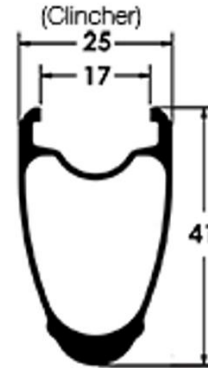


<u>PART NO.</u>	<u>HUB COMPONENTS AND ACCESSORIES</u>	<u>QTY.</u>
22145	FREEHUB, GW SHIM 11 SPD	
22147	FREEHUB, GW CAMPY 11 SPD	
22146	FREEHUB, GW XD 11 SPD	
22155	HUB GW ROAD 4 PAWL& SPRING KIT	
22162	SPACER, GW REAR AXLE	
22129	END CAP, GW RB FRNT QR 9/100	
22130	END CAP, GW RB REAR QR 9/130	
22163	SEAL, GW REAR HUB NDS	
22160	AXLE, GW FRONT QR	
22159	AXLE, GW RB REAR 15/20/130	
20163	BEARING, 6902 S&S	



ASSAULT SLG TUBELESS CLINCHER PERFORMANCE ROAD

77381	WS, ASSAULT C TL RB SHIM 20/24	
77383	ASSAULT C TL RB FRONT 20H	1
67383	D RIM, H ₂ O ASSAULT C TL RB 20H	1
20918	RIM TAPE, TL 22MM 5.5M INSTALLED	1
22105	HUB, GW RB FRNT 5/100 20H	1
21554	SPOKE, SPM CXSPNT SP 272MM BLK	20
20311	NIPPLE, EXT BLACK ALLOY SQ HEAD	20
85442	W ACC KIT, ASLT C RB TL F SHIM	1
21012	VALVE STEM, TUBELESS 55MM LONG	1
21880	BRAKE PADS CRYO PWR SHIM (PAIR)	1
20813	FRONT SKEWER MID-LEVEL	1
77384	W, ASSAULT C TL RB SHIM 24H	1
67384	D RIM, H ₂ O ASSAULT C TL RB 24H	1
20918	RIM TAPE, TL 22MM 5.5M INSTALLED	1
22106	HUB, GW RB SHIM 5/130 24H	1
21555	SPOKE, SPM CXSPNT SP 278MM BLK	12
21648	SPOKE, SPM CXSPNT SP 281MM BLK	12
20311	NIPPLE, EXT BLACK ALLOY SQ HEAD	24
85591	W ACC KIT, ASSAULT RB TL SHIM	1
21012	VALVE STEM, TUBELESS 55MM LONG	1
21880	BRAKE PADS CRYO PWR SHIM (PAIR)	1
20814	REAR SKEWER MID-LEVEL	1

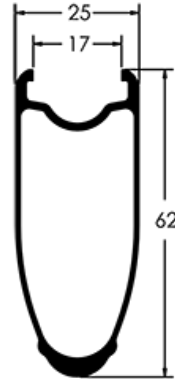


<u>PART NO.</u>	<u>HUB COMPONENTS AND ACCESSORIES</u>	<u>QTY.</u>
22145	FREEHUB, GW SHIM 11 SPD	
22147	FREEHUB, GW CAMPY 11 SPD	
22146	FREEHUB, GW XD 11 SPD	
22155	HUB GW ROAD 4 PAWL& SPRING KIT	
22162	SPACER, GW REAR AXLE	
22129	END CAP, GW RB FRNT QR 9/100	
22130	END CAP, GW RB REAR QR 9/130	
22163	SEAL, GW REAR HUB NDS	
22160	AXLE, GW FRONT QR	
22159	AXLE, GW RB REAR 15/20/130	
20163	BEARING, 6902 S&S	



STRIKE SLG TUBELESS CLINCHER PERFORMANCE ROAD

77481 WS, STRIKE C TL RB SHIM 20/24		
77483	STRIKE C TL RB FRONT 20H	1
67484	D RIM, H ₂ O STRIKE C TL RB 20H	1
20918	RIM TAPE, TL 22MM 5.5M INSTALLED	1
22105	HUB, GW RB FRNT 5/100 20H	1
21657	SPOKE, SPM CXSPNT 254MM SP BLK	20
20311	NIPPLE, EXT BLACK ALLOY SQ HEAD	20
85416	W ACC KIT, STRIKE C RB TL F SHI	1
21013	VALVE STEM, TUBELESS 75MM LONG	1
21880	BRAKE PADS CRYO PWR SHIM (PAIR)	1
20813	FRONT SKEWER MID-LEVEL	1
77484	W, STRIKE C TL RB SHIM 24H	1
67485	D RIM, H ₂ O STRIKE C TL RB 24H	1
20918	RIM TAPE, TL 22MM 5.5M INSTALLED	1
22106	HUB, GW RB SHIM 5/130 24H	1
21644	SPOKE, SPM CXSPNT 259MM SP BLK	12
21646	SPOKE, SPM CXSPNT 263MM SP BLK	12
20311	NIPPLE, EXT BLACK ALLOY SQ HEAD	24
85593	W ACC KIT, STRIKE RB SHIM	1
21013	VALVE STEM, TUBELESS 75MM LONG	1
21880	BRAKE PADS CRYO PWR SHIM (PAIR)	1
20814	REAR SKEWER MID-LEVEL	1



PART NO.	HUB COMPONENTS AND ACCESSORIES	QTY.
22145	FREEHUB, GW SHIM 11 SPD	
22147	FREEHUB, GW CAMPY 11 SPD	
22146	FREEHUB, GW XD 11 SPD	
22155	HUB GW ROAD 4 PAWL& SPRING KIT	
22162	SPACER, GW REAR AXLE	
22129	END CAP, GW RB FRNT QR 9/100	
22130	END CAP, GW RB REAR QR 9/130	
22163	SEAL, GW REAR HUB NDS	
22160	AXLE, GW FRONT QR	
22159	AXLE, GW RB REAR 15/20/130	
20163	BEARING, 6902 S&S	



REYNOLDS ALLROADS CARBON DISC WHEELS



**ATTACK DISC
BRAKE**



**STRIKE DISC
BRAKE**



**ASSAULT DISC
BRAKE**

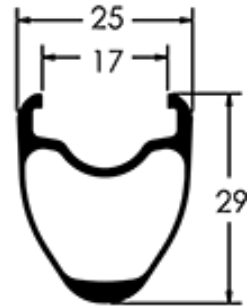


ATR - GRAVEL

ATTACK TUBELESS CLINCHER ROAD DISC BRAKE

77271 WS, ATTACK C TL DB SHIM 24/24

77273	ATTACK C TL DB FRONT 24H	1
67274	D RIM, H ₂ O ATTACK C TL DB 24H	1
20915	RIM TAPE, TL 22MM 5.5M	1
22100	HUB, ALLRD FRNT CL DB 12MM 24H	1
21649	SPOKE, SPM CXSPNT 293MM SP BLK	24
20311	NIPPLE,EXT BLACK ALLOY SQ HEAD	24
85575	W ACC KIT, ATTACK DB FRNT	1
3040	9 X 12 X 4MIL ZIP LOCK BAG	1
20333	REYNOLDS NEW PROD WEBSITE CARD	1
21011	VALVE STEM, XC 45MM LONG	1
21287	LOCK RING, CENTER LOCK	1
21289	ADAPTER, CL TO IS6-BOLT	1
22122	END CAP, ALLRD FRNT 15MM TA PAIR	1
77274	W, ATTACK C TL DB SHIM 24H	1
67274	D RIM, H ₂ O ATTACK C TL DB 24H	1
20915	RIM TAPE, TL 22MM 5.5M	1
22102	HUB, ALLRD CL DB SHIM 24H	1
21650	SPOKE, SPM CXSPNT 295MM SP BLK	12
21562	SPOKE, SPM CXSPNT 291MM SP BLK	12
20311	NIPPLE,EXT BLACK ALLOY SQ HEAD	24
85576	W ACC KIT, ATTACK DB SHIM / XD	1
20333	REYNOLDS NEW PROD WEBSITE CARD	1
21011	VALVE STEM, XC 45MM LONG	1
21287	LOCK RING, CENTER LOCK	1
21289	ADAPTER, CL TO IS6-BOLT	1



HUB COMPONENTS AND ACCESSORIES

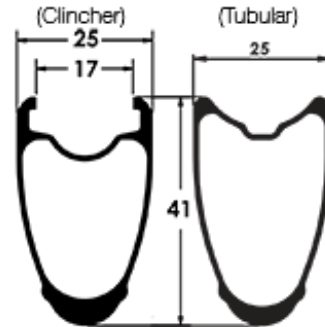
PART NO.	HUB COMPONENTS AND ACCESSORIES	QTY
22145	FREEHUB, GW SHIM 11 SPD	
22147	FREEHUB, GW CAMPY 11 SPD	
22146	FREEHUB, GW XD 11 SPD	
22121	END CAP, GW DB FRNT 12MM TA	
22122	END CAP, GW DB FRNT 15MM TA	
22120	END CAP, GW DB FRNT 9MM QR	
22128	END CAP, GW DB R 12/142 TA	
22124	END CAP, GW DB R 9/135 QR	
22126	END CAP, GW DB R 12/135 TA	
22161	AXLE, GW FRONT TA	
22158	AXLE, GW DB REAR 15/12/135	
20163	BEARING, 6902 S&S	4
21289	ADAPTER, CL TO IS6-BOLT	2
21287	LOCK RING, CENTER LOCK	2



ASSAULT TUBELESS CLINCHER ROAD DISC BRAKE

77361 WS, ASSAULT C TL DB SHIM 24/24

77363	ASSAULT C TL DB FRONT 24H	1
67364	D RIM, H ₂ O ASSAULT C TL DB 24H	1
20915	RIM TAPE, TL 22MM 5.5M	1
22100	HUB, ALLRD FRNT CL DB 12MM 24H	1
21648	SPOKE, SPM CXSPNT 281MM SP BLK	24
20311	NIPPLE, EXT BLACK ALLOY SQ HEAD	24
85577	W ACC KIT, ASSAULT DB FRNT	1
20333	REYNOLDS NEW PROD WEBSITE CARD	1
21012	VALVE STEM, XC 55MM LONG	1
21287	LOCK RING, CENTER LOCK	1
21289	ADAPTER, CL TO IS6-BOLT	1
22122	END CAP, ALLRD FRNT 15MM TA PAIR	1
77364	W, ASSAULT C TL DB SHIM 24H	1
67364	D RIM, H ₂ O ASSAULT C TL DB 24H	1
20915	RIM TAPE, TL 22MM 5.5M	1
22102	HUB, ALLRD CL DB SHIM 24H	1
21557	SPOKE, SPM CXSPNT 282MM SP BLK	12
21564	SPOKE, SPM CXSPNT 279MM SP BLK	12
20311	NIPPLE, EXT BLACK ALLOY SQ HEAD	24
85578	W ACC KIT, ASSAULT DB SHIM / XD	1
20333	REYNOLDS NEW PROD WEBSITE CARD	1
21012	VALVE STEM, XC 55MM LONG	1
21287	LOCK RING, CENTER LOCK	1
21289	ADAPTER, CL TO IS6-BOLT	1

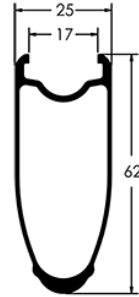


PART NO.	HUB COMPONENTS AND ACCESSORIES	QTY
22145	FREEHUB, GW SHIM 11 SPD	
22147	FREEHUB, GW CAMPY 11 SPD	
22146	FREEHUB, GW XD 11 SPD	
22121	END CAP, GW DB FRNT 12MM TA	
22122	END CAP, GW DB FRNT 15MM TA	
22120	END CAP, GW DB FRNT 9MM QR	
22128	END CAP, GW DB R 12/142 TA	
22124	END CAP, GW DB R 9/135 QR	
22126	END CAP, GW DB R 12/135 TA	
22161	AXLE, GW FRONT TA	
22158	AXLE, GW DB REAR 15/12/135	
20163	BEARING, 6902 S&S	4
21289	ADAPTER, CL TO IS6-BOLT	2
21287	LOCK RING, CENTER LOCK	2



STRIKE TUBELESS CLINCHER ROAD DISC BRAKE

77461	WS, STRIKE C TL DB SHIM 24/24	
77463	STRIKE C TL DB FRONT 24H	1
67464	D RIM, H ₂ O STRIKE C TL DB 24H	1
20915	RIM TAPE, TL 22MM 5.5M	1
22100	HUB, ALLRD FRNT CL DB 12MM 24H	1
21551	SPOKE, SPM CXSPNT 260 SP BLK	12
21660	SPOKE, SPM CXSPNT 262 SP BLK	12
20311	NIPPLE, EXT BLACK ALLOY SQ HEAD	24
85579	W ACC KIT, STRIKE DB FRNT	1
20333	REYNOLDS NEW PROD WEBSITE CARD	1
21013	VALVE STEM, XC 75MM LONG	1
21287	LOCK RING, CENTER LOCK	1
21289	ADAPTER, CL TO IS6-BOLT	1
22122	END CAP, ALLRD FRNT 15MM TA PAIR	1
77464	W, STRIKE C TL DB SHIM 24H	1
67464	D RIM, H ₂ O STRIKE C TL DB 24H	1
20915	RIM TAPE, TL 22MM 5.5M	1
22102	HUB, ALLRD CL DB SHIM 24H	1
21551	SPOKE, SPM CXSPNT 260 SP BLK	12
21647	SPOKE, SPM CXSPNT 264 SP BLK	12
20311	NIPPLE, EXT BLACK ALLOY SQ HEAD	24
85580	W ACC KIT, STRIKE DB SHIM / XD	1
20333	REYNOLDS NEW PROD WEBSITE CARD	1
21013	VALVE STEM, XC 75MM LONG	1
21287	LOCK RING, CENTER LOCK	1
21289	ADAPTER, CL TO IS6-BOLT	1

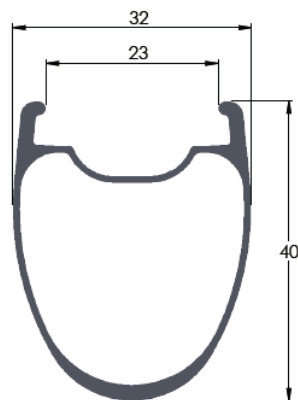


HUB COMPONENTS AND ACCESSORIES		
PART NO.		QTY
22145	FREEHUB, GW SHIM 11 SPD	
22147	FREEHUB, GW CAMPY 11 SPD	
22146	FREEHUB, GW XD 11 SPD	
22121	END CAP, GW DB FRNT 12MM TA	
22122	END CAP, GW DB FRNT 15MM TA	
22120	END CAP, GW DB FRNT 9MM QR	
22128	END CAP, GW DB R 12/142 TA	
22124	END CAP, GW DB R 9/135 QR	
22126	END CAP, GW DB R 12/135 TA	
22161	AXLE, GW FRONT TA	
22158	AXLE, GW DB REAR 15/12/135	
20163	BEARING, 6902 S&S	4
21289	ADAPTER, CL TO IS6-BOLT	2
21287	LOCK RING, CENTER LOCK	2



ATR: ALL TERRAIN ROAD 700C GRAVEL / ROAD DISC TUBELESS CLINCHER

77321	WS, 40 ATR C TL DB SHIM 24/24	1
77323	W, 40 ATR C TL DB FRONT 24H	1
67324	D RIM, H ₂ O 40 ATR C TL DB 24H	1
20919	RIM TAPE, TL 25MM 5.5M INSTALED	1
22100	HUB, GW FRNT CL DB 12MM 24H	1
21626	SPOKE, SPM RACE 282MM SP BLK	24
20311	NIPPLE, EXT BLACK ALLOY SQ HEAD	24
85577	W ACC KIT, ASLT/ATR C TL DB FR	1
21012	VALVE STEM, TUBELESS 55MM LONG	1
21287	LOCK RING, CENTER LOCK	1
21289	ADAPTER, CL TO IS6-BOLT	1
22122	END CAP, GW DB FRNT 15MM TA	1
77324	W, 40 ATR C TL DB SHIMANO 24H	1
67324	D RIM, H ₂ O 40 ATR C TL DB 24H	1
20919	RIM TAPE, TL 25MM 5.5M INSTALED	1
22102	HUB, GW CL DB SHIM 12/142 24H	1
21624	SPOKE, SPM RACE 280MM SP BLK	12
21627	SPOKE, SPM RACE SP 283MM BLK	12
20311	NIPPLE, EXT BLACK ALLOY SQ HEAD	24
85578	W ACC KIT, ASLT/ATR C TL DB RE	1
21012	VALVE STEM, TUBELESS 55MM LONG	1
21287	LOCK RING, CENTER LOCK	1
21289	ADAPTER, CL TO IS6-BOLT	1

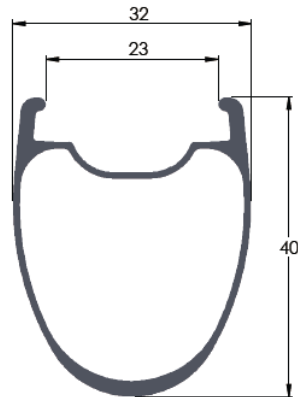


HUB COMPONENTS AND ACCESSORIES		
PART NO.		QTY
22145	FREEHUB, GW SHIM 11 SPD	
22147	FREEHUB, GW CAMPY 11 SPD	
22146	FREEHUB, GW XD 11 SPD	
22121	END CAP, GW DB FRNT 12MM TA	
22122	END CAP, GW DB FRNT 15MM TA	
22120	END CAP, GW DB FRNT 9MM QR	
22128	END CAP, GW DB R 12/142 TA	
22124	END CAP, GW DB R 9/135 QR	
22126	END CAP, GW DB R 12/135 TA	
22161	AXLE, GW FRONT TA	
22158	AXLE, GW DB REAR 15/12/135	
20163	BEARING, 6902 S&S	4
21289	ADAPTER, CL TO IS6-BOLT	2
21287	LOCK RING, CENTER LOCK	2



ATR: ALL TERRAIN ROAD 650B GRAVEL / ROAD DISC TUBELESS CLINCHER

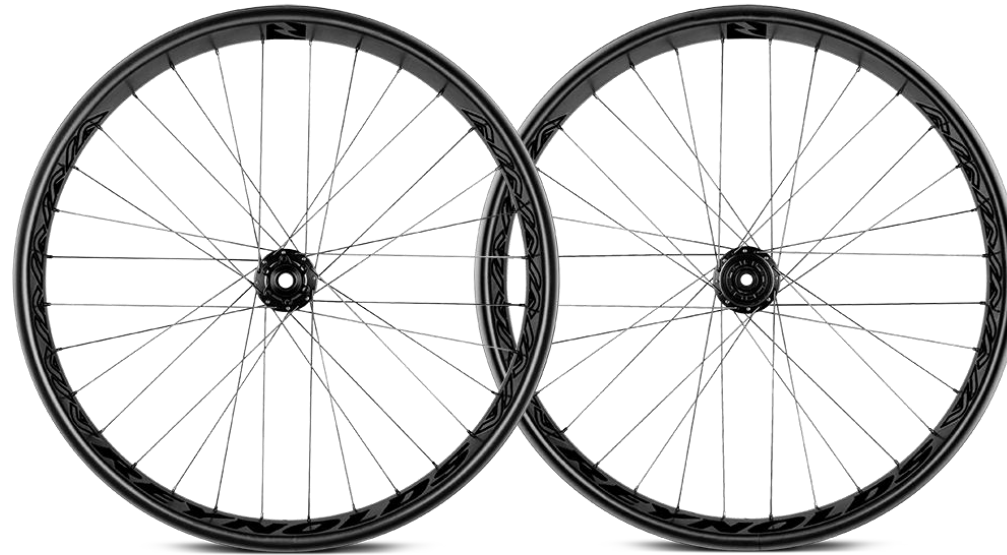
77311	WS, ATR2 650b CTL DB SHIM 2424	1
77313	W, ATR2 650b C TL DB FRONT 24H	1
67314	D RIM, H ₂ O ATR2 650b C TL DB24	1
20919	RIM TAPE, TL 25MM 5.5M INSTALED	1
22100	HUB, GW FRNT CL DB 12MM 24H	1
21611	SPOKE, SPM RACE SP 262MM BLK	24
20311	NIPPLE, EXT BLACK ALLOY SQ HEAD	24
85577	W ACC KIT, ASLT/ATR C TL DB FR	1
21012	VALVE STEM, TUBELESS 55MM LONG	1
21287	LOCK RING, CENTER LOCK	1
21289	ADAPTER, CL TO IS6-BOLT	1
22122	END CAP, GW DB FRNT 15MM TA	1
77314	W, ATR2 650b C TL DB SHIM 24H	1
67314	D RIM, H ₂ O ATR2 650b C TL DB24	1
20919	RIM TAPE, TL 25MM 5.5M INSTALED	1
22102	HUB, GW CL DB SHIM 12/142 24H	1
21613	SPOKE, SPM RACE 264MM SP BLK	12
21610	SPOKE, SPM RACE SP 260MM BLK	12
20311	NIPPLE, EXT BLACK ALLOY SQ HEAD	24
85578	W ACC KIT, ASLT/ATR C TL DB RE	1
21012	VALVE STEM, TUBELESS 55MM LONG	1
21287	LOCK RING, CENTER LOCK	1
21289	ADAPTER, CL TO IS6-BOLT	1



PART NO.	HUB COMPONENTS AND ACCESSORIES	QTY
22145	FREEHUB, GW SHIM 11 SPD	
22147	FREEHUB, GW CAMPY 11 SPD	
22146	FREEHUB, GW XD 11 SPD	
22121	END CAP, GW DB FRNT 12MM TA	
22122	END CAP, GW DB FRNT 15MM TA	
22120	END CAP, GW DB FRNT 9MM QR	
22128	END CAP, GW DB R 12/142 TA	
22124	END CAP, GW DB R 9/135 QR	
22126	END CAP, GW DB R 12/135 TA	
22161	AXLE, GW FRONT TA	
22158	AXLE, GW DB REAR 15/12/135	
20163	BEARING, 6902 S&S	4
21289	ADAPTER, CL TO IS6-BOLT	2
21287	LOCK RING, CENTER LOCK	2



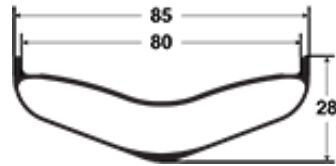
REYNOLDS CARBON FATBIKE MOUNTAIN WHEEL



DEAN

DEAN 26 FATBIKE 177MM TUBELESS CARBON MOUNTAIN

PART NO.	ITEM DESCRIPTION	QTY
77801	WS, FATBIKE 80 177 32/32H	1
77803	W, FATBIKE 80 F 150 32 HOLE	1
20311	NIPPLE,EXT BLACK ALLOY SQ HEAD	32
21712	SPOKE, SPM RACE 255MM JB BLK	16
21715	SPOKE, SPM RACE 258MM JB BLK	16
21918	DECAL, REY FATBIKE BLACK/BLACK	1
21832	HUB, i9 FB JB IS6 32H 150X12TA	1
56800	D RIM, FATBIKE 80MM 32H	1
77804	W, FATBIKE 80 R XD 177 32H	1
20311	NIPPLE,EXT BLACK ALLOY SQ HEAD	32
21711	SPOKE, SPM RACE 254MM JB BLK	16
21712	SPOKE, SPM RACE 255MM JB BLK	16
21918	DECAL, REY FATBIKE BLACK/BLACK	1
21833	HUB, i9 FB JB IS6 XD 32H 177	1
56800	D RIM, FATBIKE 80MM 32H	1
	W ACC KIT, REY DH/FATBIKE TL	
20908	RIM TAPE, TUBELESS 28MM 11 M	1
20904	VALVE STEM, AM 45MM LONG	2

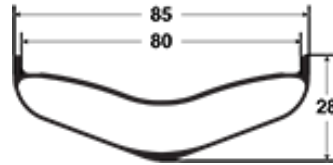


PART NO.	HUB COMPONENTS AND ACCESSORIES	QTY
21844	FREEHUB, i9 SHIMANO 9/10/11	
21845	FREEHUB, i9 SRAM XD11	
20165	BEARING, FRONT HUB BB18307	2
20166	BEARING, FREEHUB BB31803	1
20167	BEARING, REAR HUB BB61803	1
20168	BEARING, REAR HUBBB 61903	2



DEAN 26 FATBIKE 197MM TUBELESS CARBON MOUNTAIN

PART NO.	ITEM DESCRIPTION	QTY
77801	WS, FATBIKE 80 177 32/32H	1
77803	W, FATBIKE 80 F 150 32 HOLE	1
20311	NIPPLE,EXT BLACK ALLOY SQ HEAD	32
21712	SPOKE, SPM RACE 255MM JB BLK	16
21715	SPOKE, SPM RACE 258MM JB BLK	16
21918	DECAL, REY FATBIKE BLACK/BLACK	1
21832	HUB, i9 FB JB IS6 32H 150X12TA	1
56800	D RIM, FATBIKE 80MM 32H	1
77805	W, FATBIKE 80 R XD 177 32H	1
20311	NIPPLE,EXT BLACK ALLOY SQ HEAD	32
21714	SPOKE, SPM RACE 257MM JB BLK	16
21715	SPOKE, SPM RACE 258MM JB BLK	16
21918	DECAL, REY FATBIKE BLACK/BLACK	1
21834	HUB, i9 FB JB IS6 XD 32H 197	1
56800	D RIM, FATBIKE 80MM 32H	1
	W ACC KIT, REY DH/FATBIKE TL	
20908	RIM TAPE, TUBELESS 28MM 11 M	1
20904	VALVE STEM, AM 45MM LONG	2



PART NO.	HUB COMPONENTS AND ACCESSORIES	QTY
21844	FREEHUB, i9 SHIMANO 9/10/11	
21845	FREEHUB, i9 SRAM XD11	
20165	BEARING, FRONT HUB BB18307	2
20166	BEARING, FREEHUB BB31803	1
20167	BEARING, REAR HUB BB61803	1
20168	BEARING, REAR HUBBB 61903	2



REYNOLDS BLACK LABEL CARBON 27.5 MOUNTAIN WHEELS



27.5 TRAIL ASYM



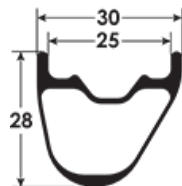
27.5 ENDURO ASYM



27.5 PLUS

BLACK LABEL 27.5 TRAIL TUBELESS CARBON MOUNTAIN

PART NO.	ITEM DESCRIPTION	QTY
77501	WS, 27.5 TRAIL BL ASYM 28/28H	1
77503	W, 27.5 TRAIL BL ASYM FRNT 28H	1
21826	HUB, MTN i9 SP CL 28H 100x15TA	1
20311	NIPPLE,EXT BLACK ALLOY SQ HEAD	28
21595	SPOKE, SPM CX-RAY 282MM SP BLK	28
66503	D RIM, H ₂ O 27.5 TRAIL ASYM 28H	1
77504	W, 27.5 TRAIL BL ASYM SHIM 28H	1
21828	HUB, MTN i9 SP CLSHIM28H142x12	1
20311	NIPPLE,EXT BLACK ALLOY SQ HEAD	28
21594	SPOKE, SPM CX-RAY 282MM SP BLK	28
66503	D RIM, H ₂ O 27.5 TRAIL ASYM 28H	1
	W ACC KIT, MTN ASYM TL	
20908	RIM TAPE, TUBELESS 28MM 11 M	1
20904	VALVE STEM, AM 45MM LONG	2
21287	LOCK RING, CENTER LOCK	2
21289	ADAPTER, CL TO IS6-BOLT	2

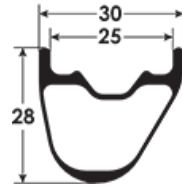


PART NO.	HUB COMPONENTS AND ACCESSORIES	QTY
21844	FREEHUB, i9 SHIM 10SP COMPLETE	
21845	FREEHUB, i9 XD 11SP COMPLETE	
21840	END CAP, i9 FRONT 15mm TA	
21841	END CAP, i9 REAR MTN 12mm TA	
21842	END CAP,i9 FRT QR CL	
21843	END CAP i9, REAR CL QR	
21848	AXLE, i9 MTN FRT CL 100mm HUB	
21849	AXLE, i9 MTN FRT CL 110mm HUB	
21850	AXLE, i9 MTN REAR CL12x142 HUB	
21851	AXLE, i9 MTN REAR CL12x148 HUB	
20165	BEARING, ENDURO 18307 ABEC 5	2
20166	BEARING, ENDURO 31803 ABEC 5	1
20167	BEARING, ENDURO 61803 ABEC 5	1
20168	BEARING, ENDURO 61903 ABEC 5	2



BLACK LABEL 27.5 TRAIL BST TUBELESS CARBON MOUNTAIN

PART NO.	ITEM DESCRIPTION	QTY
77506	WS, 27.5 TRAIL BL ASYM BST 28/28H	1
77508	W, 27.5 TRAIL BL ASYM BST FRNT 28H	1
21827	HUB, MTN i9 SP CL 28H 110x15TA	1
20311	NIPPLE,EXT BLACK ALLOY SQ HEAD	28
21595	SPOKE, SPM CX-RAY 282MM SP BLK	28
66503	D RIM, H ₂ O 27.5 TRAIL ASYM 28H	1
77509	W, 27.5 TRAIL BL ASYM BST SHIM 28H	1
21829	HUB, MTN i9 SP CLSHIM28H148x12	1
20311	NIPPLE,EXT BLACK ALLOY SQ HEAD	28
21594	SPOKE, SPM CX-RAY 282MM SP BLK	28
66503	D RIM, H ₂ O 27.5 TRAIL ASYM 28H	1
	W ACC KIT, MTN ASYM TL	
20908	RIM TAPE, TUBELESS 28MM 11 M	1
20904	VALVE STEM, AM 45MM LONG	2
21287	LOCK RING, CENTER LOCK	2
21289	ADAPTER, CL TO IS6-BOLT	2

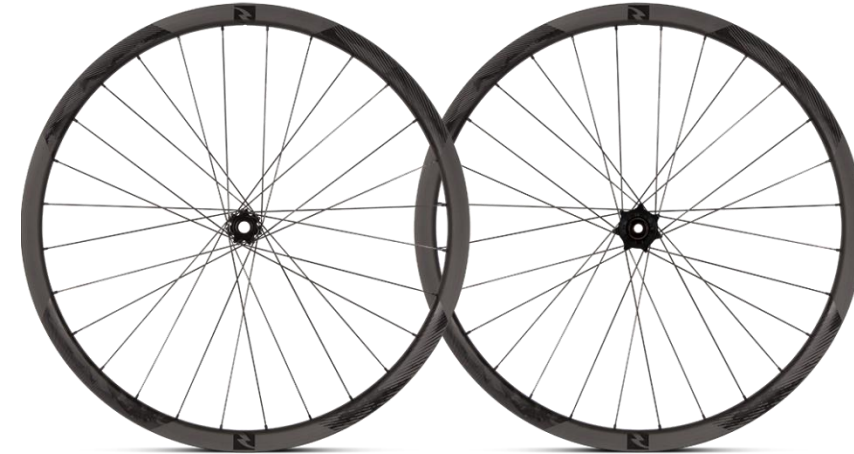
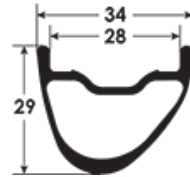


PART NO.	HUB COMPONENTS AND ACCESSORIES	QTY
21844	FREEHUB, i9 SHIM 10SP COMPLETE	
21845	FREEHUB, i9 XD 11SP COMPLETE	
21840	END CAP, i9 FRONT 15mm TA	
21841	END CAP, i9 REAR MTN 12mm TA	
21842	END CAP, i9 FRT QR CL	
21843	END CAP i9, REAR CL QR	
21848	AXLE, i9 MTN FRT CL 100mm HUB	
21849	AXLE, i9 MTN FRT CL 110mm HUB	
21850	AXLE, i9 MTN REAR CL12x142 HUB	
21851	AXLE, i9 MTN REAR CL12x148 HUB	
20165	BEARING, ENDURO 18307 ABEC 5	2
20166	BEARING, ENDURO 31803 ABEC 5	1
20167	BEARING, ENDURO 61803 ABEC 5	1
20168	BEARING, ENDURO 61903 ABEC 5	2



BLACK LABEL 27.5 ENDURO TUBELESS CARBON MOUNTAIN

PART NO.	ITEM DESCRIPTION	QTY
77511	WS, 27.5 ENDURO BL ASYM 28/28H	1
77513	W,27.5 ENDURO BL ASYM FRNT 28H	1
20311	NIPPLE,EXT BLACK ALLOY SQ HEAD	28
21594	SPOKE, SPM CX-RAY 281MM SP BLK	14
21595	SPOKE, SPM CX-RAY 282MM SP BLK	14
21826	HUB, MTN i9 SP CL 28H 100x15TA	1
66513	D RIM, H ₂ O 27.5 END ASYM 28H	1
77514	W,27.5 ENDURO BL ASYM SHIM 28H	1
20311	NIPPLE,EXT BLACK ALLOY SQ HEAD	28
21594	SPOKE, SPM CX-RAY 281MM SP BLK	28
21828	HUB, MTN i9 SP CLSHIM28H142x12	1
66513	D RIM, H ₂ O 27.5 END ASYM 28H	1
	W ACC KIT, MTN 27.5 & 29 ASYM	
20908	RIM TAPE, TUBELESS 28MM 11 M	1
20904	VALVE STEM, AM 45MM LONG	2
21287	LOCK RING, CENTER LOCK	2
21289	ADAPTER, CL TO IS6-BOLT	2

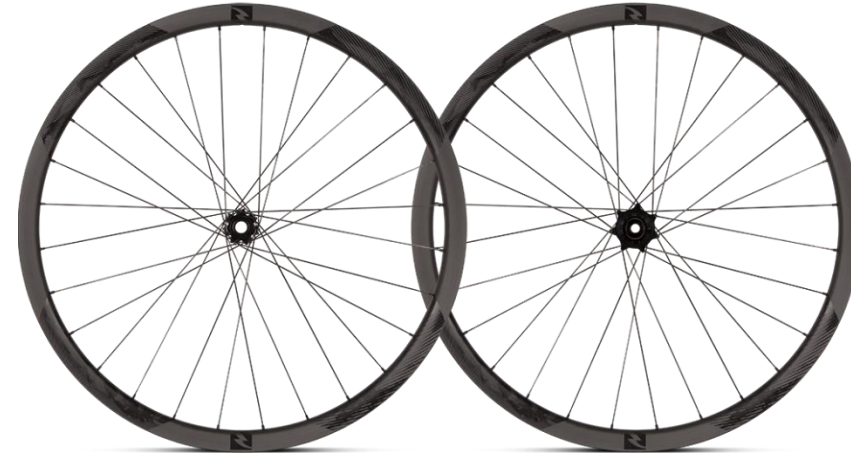
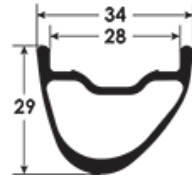


PART NO.	HUB COMPONENTS AND ACCESSORIES	QTY
21844	FREEHUB, i9 SHIM 10SP COMPLETE	
21845	FREEHUB, i9 XD 11SP COMPLETE	
21840	END CAP, i9 FRONT 15mm TA	
21841	END CAP, i9 REAR MTN 12mm TA	
21842	END CAP,i9 FRT QR CL	
21843	END CAP i9, REAR CL QR	
21848	AXLE, i9 MTN FRT CL 100mm HUB	
21849	AXLE, i9 MTN FRT CL 110mm HUB	
21850	AXLE, i9 MTN REAR CL12x142 HUB	
21851	AXLE, i9 MTN REAR CL12x148 HUB	
20165	BEARING, ENDURO 18307 ABEC 5	2
20166	BEARING, ENDURO 31803 ABEC 5	1
20167	BEARING, ENDURO 61803 ABEC 5	1
20168	BEARING, ENDURO 61903 ABEC 5	2



BLACK LABEL 27.5 ENDURO BST TUBELESS CARBON MOUNTAIN

PART NO.	ITEM DESCRIPTION	QTY
77511	WS, 27.5 ENDURO BL ASYM BST 28/28H	1
77518	W,27.5 ENDURO BL ASYM BST FRNT 28H	1
20311	NIPPLE,EXT BLACK ALLOY SQ HEAD	28
21594	SPOKE, SPM CX-RAY 281MM SP BLK	14
21595	SPOKE, SPM CX-RAY 282MM SP BLK	14
21827	HUB, MTN i9 SP CL 28H 110x15TA	1
66513	D RIM, H ₂ O 27.5 END ASYM 28H	1
77519	W,27.5 ENDURO BL ASYM BST SHIM 28H	1
20311	NIPPLE,EXT BLACK ALLOY SQ HEAD	28
21594	SPOKE, SPM CX-RAY 281MM SP BLK	28
21829	HUB, MTN i9 SP CLSHIM28H148x12	1
66513	D RIM, H ₂ O 27.5 END ASYM 28H	1
	W ACC KIT, MTN 27.5 & 29 ASYM	
20908	RIM TAPE, TUBELESS 28MM 11 M	1
20904	VALVE STEM, AM 45MM LONG	2
21287	LOCK RING, CENTER LOCK	2
21289	ADAPTER, CL TO IS6-BOLT	2

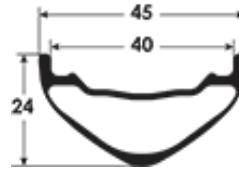


PART NO.	HUB COMPONENTS AND ACCESSORIES	QTY
21844	FREEHUB, i9 SHIM 10SP COMPLETE	
21845	FREEHUB, i9 XD 11SP COMPLETE	
21840	END CAP, i9 FRONT 15mm TA	
21841	END CAP, i9 REAR MTN 12mm TA	
21842	END CAP,i9 FRT QR CL	
21843	END CAP i9, REAR CL QR	
21848	AXLE, i9 MTN FRT CL 100mm HUB	
21849	AXLE, i9 MTN FRT CL 110mm HUB	
21850	AXLE, i9 MTN REAR CL12x142 HUB	
21851	AXLE, i9 MTN REAR CL12x148 HUB	
20165	BEARING, ENDURO 18307 ABEC 5	2
20166	BEARING, ENDURO 31803 ABEC 5	1
20167	BEARING, ENDURO 61803 ABEC 5	1
20168	BEARING, ENDURO 61903 ABEC 5	2



BLACK LABEL 27.5 PLUS TUBELESS CARBON MOUNTAIN

PART NO.	ITEM DESCRIPTION	QTY
77521	WS, 27.5 PLUS BL 28/28H	1
77523	W, 27.5 PLUS BL FRONT 28H	1
20311	NIPPLE,EXT BLACK ALLOY SQ HEAD	28
21495	DECAL, 27.5 PLUS BL	1
21596	SPOKE, SPM CX-RAY 283MM SP BLK	14
21605	SPOKE, SPM CX-RAY 285MM SP BLK	14
21827	HUB, MTN i9 SP CL 28H 110x15TA	1
66523	D RIM, H ₂ O 27.5 PLUS 28H	1
77524	W, 27.5 PLUS BL SHIMANO 28H	1
20311	NIPPLE,EXT BLACK ALLOY SQ HEAD	28
21495	DECAL, 27.5 PLUS BL	1
21531	SPOKE, SPM CX-RAY 284MM SP BLK	28
21829	HUB, MTN i9 SP CLSHIM28H148x12	1
66523	D RIM, H ₂ O 27.5 PLUS 28H	1
	W ACC KIT, MTN 27.5 PLUS	
20904	VALVE STEM, AM 45MM LONG	2
20908	RIM TAPE, TUBELESS 28MM 11 M	1
21287	LOCK RING, CENTER LOCK	2
21289	ADAPTER, CL TO IS6-BOLT	2

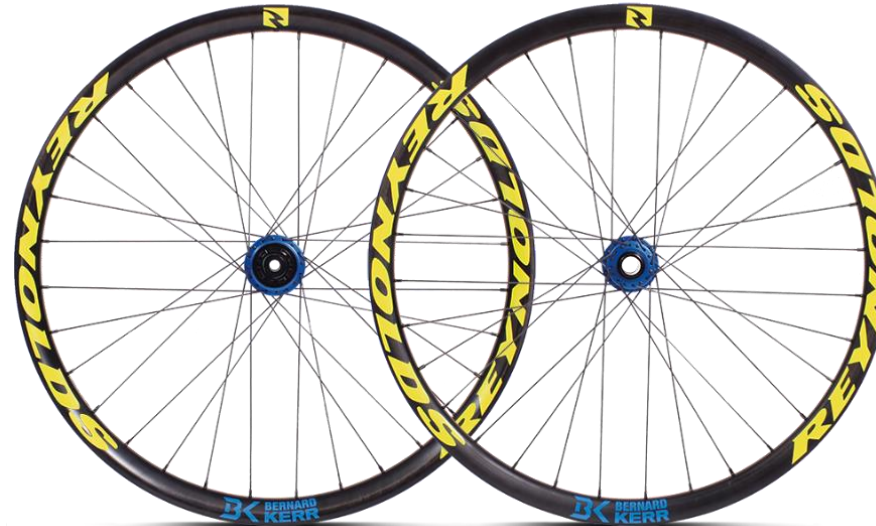
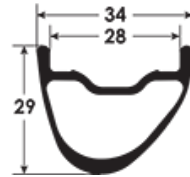


PART NO.	HUB COMPONENTS AND ACCESSORIES	QTY
21844	FREEHUB, i9 SHIM 10SP COMPLETE	
21845	FREEHUB, i9 XD 11SP COMPLETE	
21840	END CAP, i9 FRONT 15mm TA	
21841	END CAP, i9 REAR MTN 12mm TA	
21842	END CAP,i9 FRT QR CL	
21843	END CAP i9, REAR CL QR	
21848	AXLE, i9 MTN FRT CL 100mm HUB	
21849	AXLE, i9 MTN FRT CL 110mm HUB	
21850	AXLE, i9 MTN REAR CL12x142 HUB	
21851	AXLE, i9 MTN REAR CL12x148 HUB	
20165	BEARING, ENDURO 18307 ABEC 5	2
20166	BEARING, ENDURO 31803 ABEC 5	1
20167	BEARING, ENDURO 61803 ABEC 5	1
20168	BEARING, ENDURO 61903 ABEC 5	2



BLACK LABEL 27.5 DH LTD BK EDITION CARBON MOUNTAIN

PART NO.	ITEM DESCRIPTION	QTY
77551	WS, 27.5 DH LTD ASYM 32/32H	
77553	W, 27.5 DH LTD ASYM FRNT 32H	1
57554	D RIM, 27.5 DOWNHILL ASYM 32H	1
21886	RIM TAPE, TL 30MM 5.5M INSTALED	1
21924	HUB, i9 DH JB IS6 FRNT 32H BLU	1
21753	SPOKE, SPM SPRINT 263MM JB BLK	16
21757	SPOKE, SPM SPRINT 267MM JB BLK	16
20315	NIPPLE, BRASS 14MM BLACK EXT	32
22050	DECAL, PIVOT DH TEAM GREEN x2	1
22049*	DECAL, PIVOT DH TEAM BLACK	1
20120	BOX, TW DBLE WHL RNLD WIDE29er	0.5
85181	W ACC KIT, REY DH/FATBIKE TL	1
20904	VALVE STEM, AM 45MM LONG	1
77554	W, 27.5 DH LTD ASYM SHIM 32H	1
57554	D RIM, 27.5 DOWNHILL ASYM 32H	1
21886	RIM TAPE, TL 30MM 5.5M INSTALED	1
21925	HUB, i9 DH JB IS6 SHIM 32H BLU	1
21755	SPOKE, SPM SPRINT 265MM JB BLK	16
21756	SPOKE, SPM SPRINT 266MM JB BLK	16
20315	NIPPLE, BRASS 14MM BLACK EXT	32
22050	DECAL, PIVOT DH TEAM GREEN x2	1
20120	BOX, TW DBLE WHL RNLD WIDE29er	0.5
22048	DECAL, B KERR DH LTD BLUE	1
22049*	DECAL, PIVOT DH TEAM BLACK	1
85181	W ACC KIT, REY DH/FATBIKE TL	1
20904	VALVE STEM, AM 45MM LONG	1

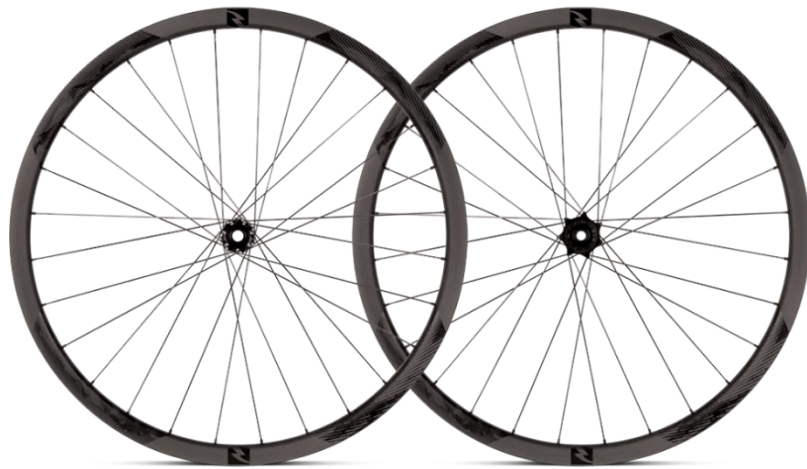


PART NO.	HUB COMPONENTS AND ACCESSORIES	QTY
21844	FREEHUB, i9 SHIM 10SP COMPLETE	
21845	FREEHUB, i9 XD 11SP COMPLETE	
21949	END CAP, i9 REAR DH 150x12 BLK	



* Optional add-on

REYNOLDS BLACK LABEL CARBON 29ER MOUNTAIN WHEELS



29 ENDURO ASYM



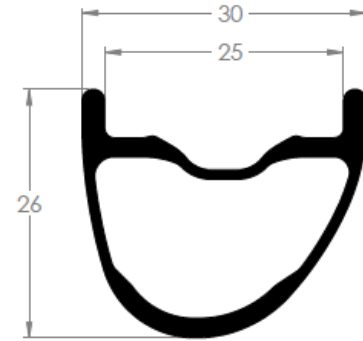
29 TRAIL ASYM



29 XC ASYM

BLACK LABEL 29 XC TUBELESS CARBON MOUNTAIN

77566	WS, 29ER XC ASYM BST 24/28H	
77568	W, 29ER XC ASYM BST FRNT 24H	1
67563	D RIM, H ₂ O 29ER XC ASYM 24H	1
20920	RIM TAPE, TL 28MM 5.5M INSTALED	1
21923	HUB, MTN i9 SP CL 24H 110x15TA	1
21600	SPOKE, SPM CX-RAY 297MM SP BLK	12
21745	SPOKE, SPM CX-RAY 295MM SP BLK	12
20311	NIPPLE, EXT BLACK ALLOY SQ HEAD	24
85513	W ACC KIT, MTN ASYM TL FRONT	1
20904	VALVE STEM, AM 45MM LONG	1
21287	LOCK RING, CENTER LOCK	1
21289	ADAPTER, CL TO IS6-BOLT	1
77569	W, 29ER XC ASYM BST REAR 28H	1
67564	D RIM, H ₂ O 29ER XC ASYM 28H	1
20920	RIM TAPE, TL 28MM 5.5M INSTALED	1
21829	HUB, MTN i9 SP CLSHIM28H148x12	1
21602	SPOKE, SPM CX-RAY 300MM SP BLK	28
20311	NIPPLE, EXT BLACK ALLOY SQ HEAD	28
85514	W ACC KIT, MTN ASYM TL REAR	1
20904	VALVE STEM, AM 45MM LONG	1
21287	LOCK RING, CENTER LOCK	1
21289	ADAPTER, CL TO IS6-BOLT	1

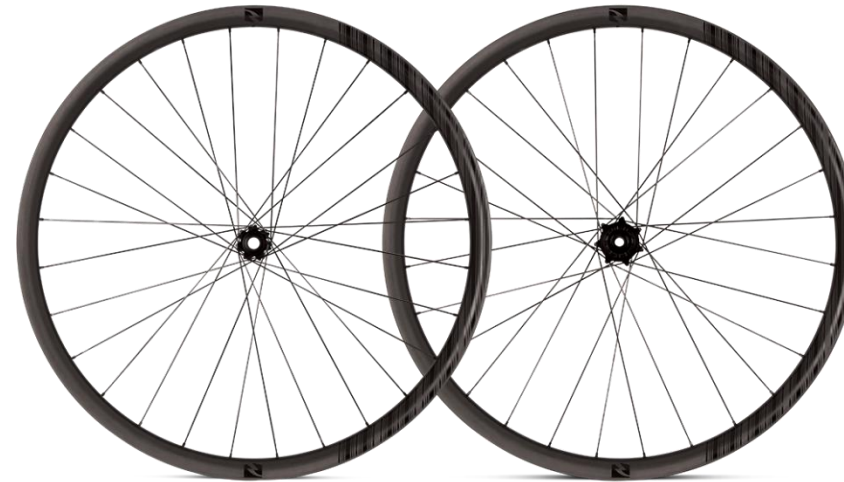
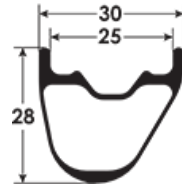


PART NO.	HUB COMPONENTS AND ACCESSORIES	QTY
21844	FREEHUB, i9 SHIM 10SP COMPLETE	
21845	FREEHUB, i9 XD 11SP COMPLETE	
21840	END CAP, i9 FRONT 15mm TA	
21841	END CAP, i9 REAR MTN 12mm TA	
21842	END CAP, i9 FRT QR CL	
21843	END CAP i9, REAR CL QR	
21848	AXLE, i9 MTN FRT CL 100mm HUB	
21849	AXLE, i9 MTN FRT CL 110mm HUB	
21850	AXLE, i9 MTN REAR CL12x142 HUB	
21851	AXLE, i9 MTN REAR CL12x148 HUB	
20165	BEARING, ENDURO 18307 ABEC 5	2
20166	BEARING, ENDURO 31803 ABEC 5	1
20167	BEARING, ENDURO 61803 ABEC 5	1
20168	BEARING, ENDURO 61903 ABEC 5	2



BLACK LABEL 29 TRAIL TUBELESS CARBON MOUNTAIN

PART NO.	ITEM DESCRIPTION	QTY
77576	WS, 29ER TRAIL BL ASYM 28/28H	1
77578	W, 29ER TRAIL BL ASYM FRNT 28H	1
20311	NIPPLE,EXT BLACK ALLOY SQ HEAD	28
20920	RIM TAPE,TL 28MM 5.5M INSTALED	1
21602	SPOKE, SPM CX-RAY 300MM SP BLK	14
21603	SPOKE, SPM CX-RAY 301MM SP BLK	14
21826	HUB, MTN i9 SP CL 28H 100x15TA	1
66578	D RIM, H ₂ O 29ER TRAIL ASYM 28H	1
77579	W, 29ER TRAIL BL ASYM SHIM 28H	1
20311	NIPPLE,EXT BLACK ALLOY SQ HEAD	28
20920	RIM TAPE,TL 28MM 5.5M INSTALED	1
21602	SPOKE, SPM CX-RAY 300MM SP BLK	14
21603	SPOKE, SPM CX-RAY 301MM SP BLK	14
21828	HUB, MTN i9 SP CLSHIM28H142x12	1
66578	D RIM, H ₂ O 29ER TRAIL ASYM 28H	1
	W ACC KIT, MTN 27.5 & 29 ASYM	
20908	RIM TAPE, TUBELESS 28MM 11 M	1
20904	VALVE STEM, AM 45MM LONG	2
21287	LOCK RING, CENTER LOCK	2
21289	ADAPTER, CL TO IS6-BOLT	2

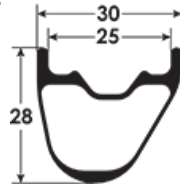


PART NO.	HUB COMPONENTS AND ACCESSORIES	QTY
21844	FREEHUB, i9 SHIM 10SP COMPLETE	
21845	FREEHUB, i9 XD 11SP COMPLETE	
21840	END CAP, i9 FRONT 15mm TA	
21841	END CAP, i9 REAR MTN 12mm TA	
21842	END CAP,i9 FRT QR CL	
21843	END CAP i9, REAR CL QR	
21848	AXLE, i9 MTN FRT CL 100mm HUB	
21849	AXLE, i9 MTN FRT CL 110mm HUB	
21850	AXLE, i9 MTN REAR CL12x142 HUB	
21851	AXLE, i9 MTN REAR CL12x148 HUB	
20165	BEARING, ENDURO 18307 ABEC 5	2
20166	BEARING, ENDURO 31803 ABEC 5	1
20167	BEARING, ENDURO 61803 ABEC 5	1
20168	BEARING, ENDURO 61903 ABEC 5	2



BLACK LABEL 29 TRAIL BST TUBELESS CARBON MOUNTAIN

PART NO.	ITEM DESCRIPTION	QTY
77581	WS, 29ER TRAIL BL ASYM BST 28/28H	1
77583	W, 29ER TRAIL BL ASYM BST FRNT 28H	1
20311	NIPPLE,EXT BLACK ALLOY SQ HEAD	28
20920	RIM TAPE,TL 28MM 5.5M INSTALED	1
21602	SPOKE, SPM CX-RAY 300MM SP BLK	14
21603	SPOKE, SPM CX-RAY 301MM SP BLK	14
21827	HUB, MTN i9 SP CL 28H 110x15TA	1
66578	D RIM, H ₂ O 29ER TRAIL ASYM 28H	1
77584	W, 29ER TRAIL BL ASYM BST SHIM 28H	1
20311	NIPPLE,EXT BLACK ALLOY SQ HEAD	28
20920	RIM TAPE,TL 28MM 5.5M INSTALED	1
21602	SPOKE, SPM CX-RAY 300MM SP BLK	14
21603	SPOKE, SPM CX-RAY 301MM SP BLK	14
21829	HUB, MTN i9 SP CLSHIM28H148x12	1
66578	D RIM, H ₂ O 29ER TRAIL ASYM 28H	1
	W ACC KIT, MTN 27.5 & 29 ASYM	
20908	RIM TAPE, TUBELESS 28MM 11 M	1
20904	VALVE STEM, AM 45MM LONG	2
21287	LOCK RING, CENTER LOCK	2
21289	ADAPTER, CL TO IS6-BOLT	2

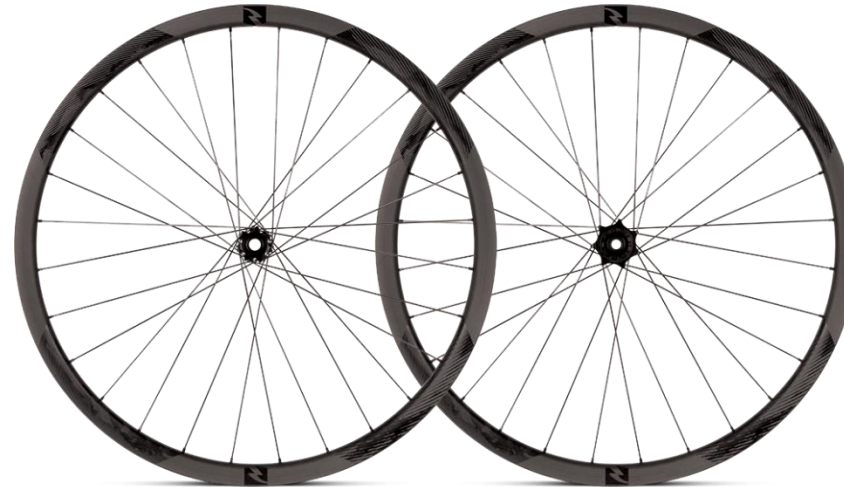
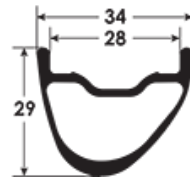


PART NO.	HUB COMPONENTS AND ACCESSORIES	QTY
21844	FREEHUB, i9 SHIM 10SP COMPLETE	
21845	FREEHUB, i9 XD 11SP COMPLETE	
21840	END CAP, i9 FRONT 15mm TA	
21841	END CAP, i9 REAR MTN 12mm TA	
21842	END CAP,i9 FRT QR CL	
21843	END CAP i9, REAR CL QR	
21848	AXLE, i9 MTN FRT CL 100mm HUB	
21849	AXLE, i9 MTN FRT CL 110mm HUB	
21850	AXLE, i9 MTN REAR CL12x142 HUB	
21851	AXLE, i9 MTN REAR CL12x148 HUB	
20165	BEARING, ENDURO 18307 ABEC 5	2
20166	BEARING, ENDURO 31803 ABEC 5	1
20167	BEARING, ENDURO 61803 ABEC 5	1
20168	BEARING, ENDURO 61903 ABEC 5	2



BLACK LABEL 29 ENDURO TUBELESS CARBON MOUNTAIN

PART NO.	ITEM DESCRIPTION	QTY
77591	WS, 29ER END ASYM 28/28H	1
77593	W, 29ER END ASYM FRNT 28H	1
20311	NIPPLE,EXT BLACK ALLOY SQ HEAD	28
21602	SPOKE, SPM CX-RAY 300MM SP BLK	14
21604	SPOKE, SPM CX-RAY 302MM SP BLK	14
21826	HUB, MTN i9 SP CL 28H 100x15TA	1
66593	D RIM, H ₂ O 29ER END ASYM 28H	1
77594	W, 29ER END ASYM REAR 28H	1
20311	NIPPLE,EXT BLACK ALLOY SQ HEAD	28
21601	SPOKE, SPM CX-RAY 299MM SP BLK	14
21603	SPOKE, SPM CX-RAY 301MM SP BLK	14
21828	HUB, MTN i9 SP CLSHIM28H 142x12	1
66593	D RIM, H ₂ O 29ER END ASYM 28H	1
	W ACC KIT, MTN 27.5 & 29 ASYM	
20904	VALVE STEM, AM 45MM LONG	2
20908	RIM TAPE, TUBELESS 28MM 11 M	1
21287	LOCK RING, CENTER LOCK	2
21289	ADAPTER, CL TO IS6-BOLT	2

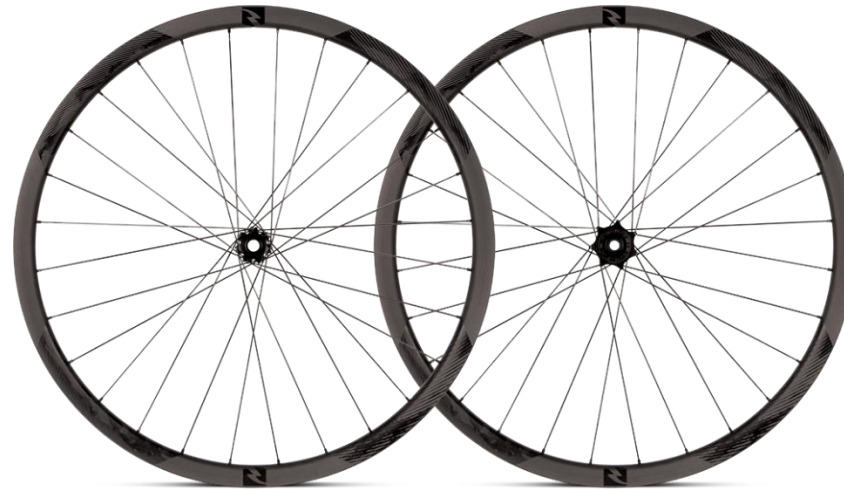
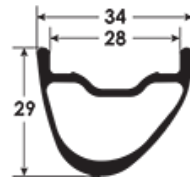


PART NO.	HUB COMPONENTS AND ACCESSORIES	QTY
21844	FREEHUB, i9 SHIM 10SP COMPLETE	
21845	FREEHUB, i9 XD 11SP COMPLETE	
21840	END CAP, i9 FRONT 15mm TA	
21841	END CAP, i9 REAR MTN 12mm TA	
21842	END CAP, i9 FRT QR CL	
21843	END CAP i9, REAR CL QR	
21848	AXLE, i9 MTN FRT CL 100mm HUB	
21849	AXLE, i9 MTN FRT CL 110mm HUB	
21850	AXLE, i9 MTN REAR CL12x142 HUB	
21851	AXLE, i9 MTN REAR CL12x148 HUB	
20165	BEARING, ENDURO 18307 ABEC 5	2
20166	BEARING, ENDURO 31803 ABEC 5	1
20167	BEARING, ENDURO 61803 ABEC 5	1
20168	BEARING, ENDURO 61903 ABEC 5	2



BLACK LABEL 29 ENDURO BST TUBELESS CARBON MOUNTAIN

PART NO.	ITEM DESCRIPTION	QTY
77596	WS, 29ER END ASYM BST 28/28H	1
77598	W, 29ER END ASYM BST FRNT 28H	1
20311	NIPPLE,EXT BLACK ALLOY SQ HEAD	28
21602	SPOKE, SPM CX-RAY 300MM SP BLK	14
21604	SPOKE, SPM CX-RAY 302MM SP BLK	14
21827	HUB, MTN i9 SP CL 28H 110x15TA	1
66593	D RIM, H ₂ O 29ER END ASYM 28H	1
77599	W, 29ER END ASYM BST REAR 28H	1
20311	NIPPLE,EXT BLACK ALLOY SQ HEAD	28
21601	SPOKE, SPM CX-RAY 299MM SP BLK	14
21603	SPOKE, SPM CX-RAY 301MM SP BLK	14
21829	HUB, MTN i9 SP CLSHIM28H 148x12	1
66593	D RIM, H ₂ O 29ER END ASYM 28H	1
	W ACC KIT, MTN 27.5 & 29 ASYM	
20904	VALVE STEM, AM 45MM LONG	2
20908	RIM TAPE, TUBELESS 28MM 11 M	1
21287	LOCK RING, CENTER LOCK	2
21289	ADAPTER, CL TO IS6-BOLT	2

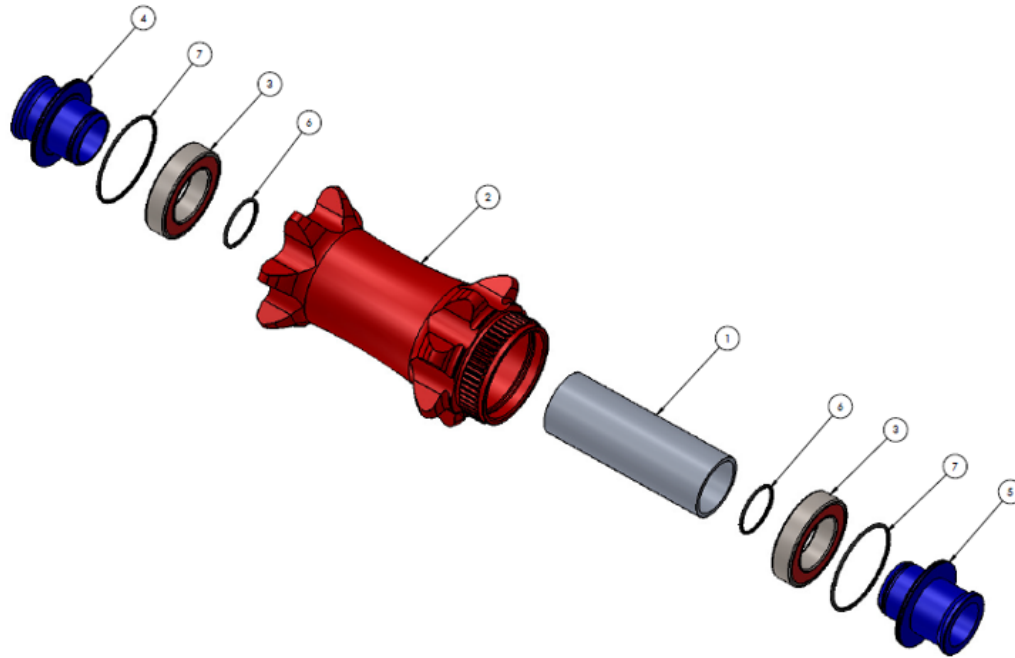


PART NO.	HUB COMPONENTS AND ACCESSORIES	QTY
21844	FREEHUB, i9 SHIM 10SP COMPLETE	
21845	FREEHUB, i9 XD 11SP COMPLETE	
21840	END CAP, i9 FRONT 15mm TA	
21841	END CAP, i9 REAR MTN 12mm TA	
21842	END CAP, i9 FRT QR CL	
21843	END CAP i9, REAR CL QR	
21848	AXLE, i9 MTN FRT CL 100mm HUB	
21849	AXLE, i9 MTN FRT CL 110mm HUB	
21850	AXLE, i9 MTN REAR CL12x142 HUB	
21851	AXLE, i9 MTN REAR CL12x148 HUB	
20165	BEARING, ENDURO 18307 ABEC 5	2
20166	BEARING, ENDURO 31803 ABEC 5	1
20167	BEARING, ENDURO 61803 ABEC 5	1
20168	BEARING, ENDURO 61903 ABEC 5	2



BLACK LABEL MTN CARBON DISC FRONT HUB

i9 Reynolds 15x100mm



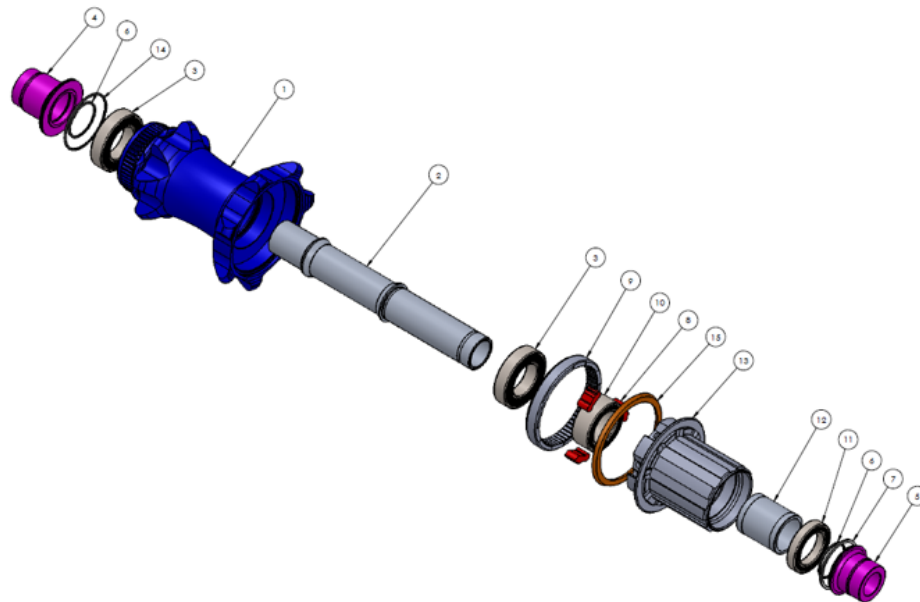
			Shimano
Item	Description	QTY	Part No.
1	Axle tube	1	21848
2	Hub Shell	1	--
3	Bearing (18307 ABEC 5)	2	20165
4	15mm End Cap, CL	1	21840
5	15mm End Cap, CL	1	21840
6	O-Ring, 15x1	2	--
7	O-Ring, 25x1	2	21853

End Caps

Part No.	Description
21840	End Cap, i9 Front 15mm End Cap Kit CL (15x100, 15x110)
21842	End Cap, i9 Front QR End Cap Kit CL (5x100)

BLACKLABEL MTN CARBON DISC REAR HUB

i9 Reynolds 12x142mm



Item	Description	QTY	XD	Shimano
			Part No.	Part No.
1	Hub shell	1	--	--
2	Axle, CL Rear	1	21850	21850
3	Bearing (61903 ABEC 5)	2	20168	20168
4	End Cap, CL Rear, Disc (NDS)	1	See Table	See Table
5	End Cap, CL Rear, Drive	1	See Table	See Table
6	O-Ring, 17x1	2	21852	21852
7	Teflon Seal, RR Drive	1	--	--
8	Pawl, Drive	3	21846	21846
9	Drive Ring, Torch FH	1	--	--
10	Bearing (31803 ABEC 5)	1	20166	20166
11	Bearing (61803 ABEC 5)	1	20167	20167
12	Spacer, Cassette Bearing	1	--	--
13	Free Hub Body	1	21845	21844
14	O-Ring 25x1	1	21853	21853
15	Seal Ring, FH to HS	1	--	--

End Caps

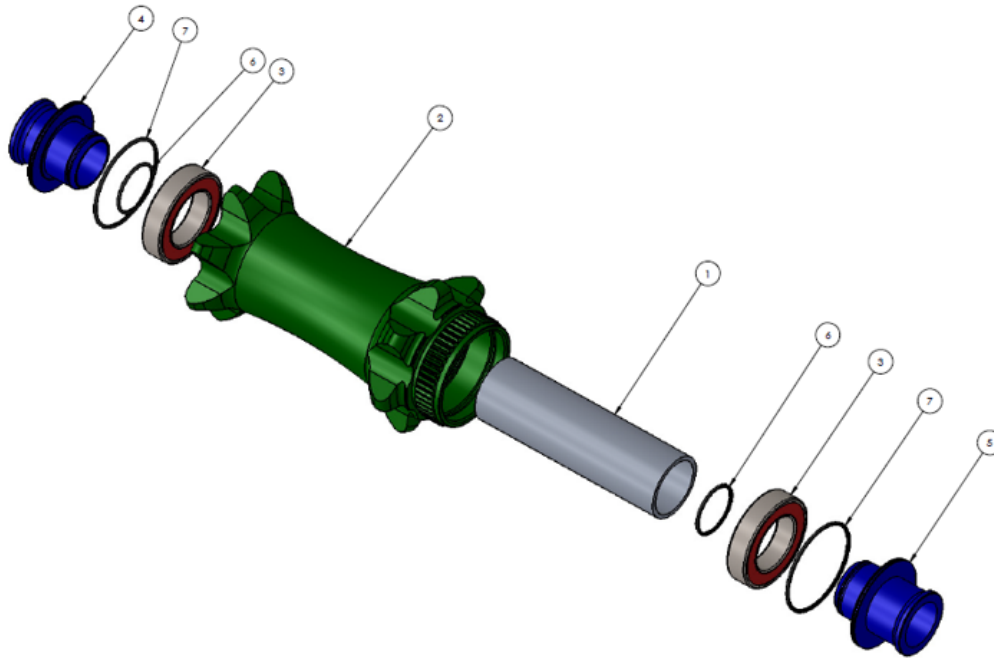
Part No.	Description
21841	End Cap, i9 Rear 12mm TA End Cap Kit (12x142, 12x148) Shim/XD
21843	End Cap, i9 Rear QR End Cap Kit CL (5x135)

Freehub and Pawl Kits

Part No.	Description
21845	Freehub, i9 Complete XD 11spd
21844	Freehub, i9 Complete Shimano 10spd
21846	Pawl Kit, i9 MTN Pawl/Spring Kit (6 pawls/6 springs)

BOOST BLACKLABEL MTN CARBON DISC FRONT HUB

i9 Reynolds 15x110mm



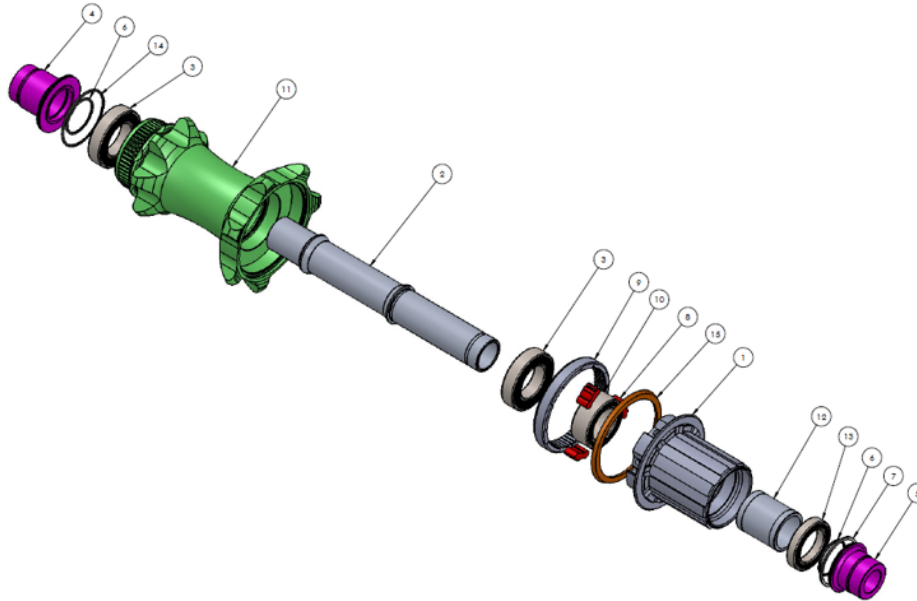
Item	Description	QTY	Part No.
1	Axle	1	21849
2	Hub Shell	1	--
3	Bearing (18307 ABEC 5)	2	20165
4	End Cap, CL, Non-disc	1	21840
5	End Cap, CL, Disc	1	21840
6	O-Ring, 15x1	2	--
7	O-Ring, 25x1	2	21853

End Caps

Part No.	Description
21840	End Cap, i9 Front 15mm End Cap Kit CL (15x100, 15x110)

BOOST BLACKLABEL MTN CARBON DISC REAR HUB

i9 Reynolds 12x148mm



Item	Description	QTY	XD		Shimano	
			Part No.	Part No.	Part No.	Part No.
1	Free Hub Body	1	21845	21844		
2	Axle, CL Rear	1	21851	21851		
3	Bearing (61903 ABEC 5)	2	20168	20168		
4	End Cap, CL Rear, Disc (NDS)	1	21841	21841		
5	End Cap, CL Rear, Drive	1	21841	21841		
6	O-Ring, 17x1	2	21852	21852		
7	Teflon Seal, RR Drive	1	--	--		
8	Pawl, Drive	3	21846	21846		
9	Drive Ring, Torch FH	1	--	--		
10	Bearing (31803 ABEC 5)	1	20166	20166		
11	Hub Shell	1	--	--		
12	Spacer, Cassette Bearing	1	--	--		
13	Bearing (61803 ABEC 5)	1	20167	20167		
14	O-Ring 25x1	1	21853	21853		
15	Seal Ring, FH to HS	1	--	--		

End Caps

Part No.	Description
21841	End Cap, i9 Rear 12mm TA End Cap Kit (12x142, 12x148) Shim/XD

Freehub and Pawl Kits

Part No.	Description
21845	Freehub, i9 Complete XD 11spd
21844	Freehub, i9 Complete Shimano 10spd
21846	Pawl Kit, i9 MTN Pawl/Spring Kit (6 pawls/6 springs)

REYNOLDS WHEEL ASSEMBLY SPECIFICATIONS

REYNOLDS TRUING TOLERANCES

Reynolds holds 3 basic truing tolerances that must be adhered during the wheel assembly process as follows:

- | | |
|--|--|
| - Wheel True (left to right) / horizontal adjustment. | - Wheel True tolerance: 0.012" (0.30mm) |
| - Wheel Hop (up and down) / vertical adjustment | - Wheel Hop tolerance: 0.020" (0.50mm) |
| - Wheel Dish (offset from the centerline of the hub) | - Wheel Dish tolerance: 0.020" (0.50mm) |

Exceptions to these tolerances: Element Discand all RZR wheel: True = 0.020" (0.50mm).

REYNOLDS LACING PATTERNS

- Refer to the Bill of Materials (BOM) for current spoke lengths, hub type, and rims used in the assembly of current wheel models.
- The number of spokes and the hub type will determine the lacing pattern of the mountain or road wheel.
 - For example, a 28-hole rear hub will have a 3-cross lacing pattern and a 16-hole front hub will have a radial lacing.

Reynolds Wheel Tension Tolerances

All Reynolds wheels will be built to the following tensions unless noted.

- All rim brake equipped wheel tensions: Front: 800-1000N, Rear: 1000-1300N
- All disc brake equipped road wheel tensions: Front and Rear: 1000-1300N
- All MTN wheel tensions: Front and Rear: 900-1200N

NOTE: Tension range for all wheels, both sides, must be <250N. Tension for all spokes on non-drive and non-brake side flanges must be a minimum of 400N.