



TOY HAULER

2017





TURN EVERY HOLIDAY INTO AN ACTION PACKED ADVENTURE

A Jayco Toy Hauler lets you enjoy your holidays, your way. Part caravan, part mobile garage, it travels where you want, when you want, with all the gear you want –and still spoils you and your mates or family, with all the comforts of home.

There are two layouts to choose from. Both accommodate dirt bikes, mountain bikes, go-karts, surfboards or just a family bunk room – you name it – and each is available in an Outback version for taking your adventures off the beaten track.

Both layouts incorporate separate living and garage zones, sleep up to eight and feature a fold-down rear ramp for ride in, ride out access.

After an adrenaline-fuelled day, there's no substitute for unwinding in comfort. With a spacious shower to wash away the day, a fully equipped kitchen to prepare a hearty meal and a supremely comfortable bed to stretch out in, the Toy Hauler is your personal retreat where you can rest and recuperate until you're ready for the next round.

Like every Jayco, Toy Haulers are built to last, and equipped for effortless enjoyment, with standard features that include a fridge, cooktop, microwave, air conditioner, innerspring double bed mattress, and roll out awning.



NATIONWIDE SUPPORT
100+ SERVICE AND DEALER LOCATIONS



ROADSIDE ASSIST
3 YEARS 24 HOURS 365 DAYS



WARRANTY PROGRAM
12 MONTHS' COMPREHENSIVE COVERAGE



BETTER VALUE
MORE FEATURES FOR LESS



GREAT RESALE VALUE
A SMARTER INVESTMENT IN THE LONG RUN

WHEREVER YOU ARE, YOU'LL ALWAYS HAVE A HOME BASE

Jayco has been designing space-efficient, feature-packed RV interiors now for four decades. So when you step inside one of our Toy Haulers, expect to be pleasantly surprised.

An adventurous spirit needs a flexible RV, and flexibility was held as a key feature of the Toy Hauler's design.

It starts with little things, like the choice of gas burners or electric cooktops, and the fully incorporated air conditioner to maintain a pitch-perfect climate inside. What's more, there's space for bigger vehicles or the whole family, depending on your needs, as additional storage or sleeping space is available with up to four folding bunk beds in the rear.

01 Stylish, full-featured en suite bathroom. **02** Bunk beds fold up for cargo carrying and down for sleeping or relaxing. **03** Spacious boot with LED light and convenient side door access. **04** JHub – an app-driven control hub for managing your caravan's on-board features (optional). **05** Kitchen drawers operate at the touch of a finger. **06** Optional four-burner gas cooktop with electric hotplate.



Shown with optional leather upgrade, JHub and additional options



BUILT IN AUSTRALIA SINCE 1975 AND STILL GOING STRONG

Jayco RVs have been helping Australians live their holiday dreams for over 40 years. We began in 1975, in the garage of a suburban home; our ambition, to build a better Camper Trailer. Today, Jayco is the most popular brand on the market. We've built, sold and supported more than 180,000 RVs to date, and now operate a 20-hectare manufacturing facility in Melbourne that employs a local workforce of 1,000+ people.

From that first Camper, Jayco has made high-quality products that offer outstanding value for money and lasting peace of mind. It's an advantage we deliver more than ever now through increased manufacturing efficiencies; proprietary technology, such as JTECH SUSPENSION, the JAYCO TOUGH FRAME and JAYCO ENDURANCE CHASSIS; and a commitment to using better materials, more precise craftsmanship, and ever-smarter design ideas and construction methods, for example:

- Our Eurostyle aluminium framed furniture features **protective curved extrusions** for strength and elegance, positive cupboard catches to secure your valuables in transit, and cabinet fronts that are screwed into place, not stapled
- Cushions are made from **high-resilience** foam, for years of comfort and support, and upholstery is treated with **antimicrobial protection** to inhibit mould, mildew and fungi, as well as dust mite protection to help prevent asthma and allergy-related conditions
- Tyres are **inflated with nitrogen** – not everyday air – reducing fuel usage, tyre wear and the risk of blowouts, while also improving ride and handling

State of the art complex

Built in Australia since 1975 – and still going strong. In 2007, Jayco moved into its current 50-acre state of the art complex at 1 Jayco Drive, Dandenong South, Victoria, with a purpose-built 60,000sqm undercover manufacturing complex. This is where all Jayco RVs are made.

Australia's most recognised brand for quality and affordable recreational vehicles, Jayco is a great success story of Australian manufacturing.

Employing over 1,000 Australians, Jayco continues as a locally owned family business.



TOUGH FRAME

Toy Haulers are built with Jayco Tough Frame construction technology. Illustrated below, this five-layer vacuum-bonded wall is both stronger than those of conventional 'timber & tin' aluminium clad RVs, and offers greater thermal and acoustic insulation.

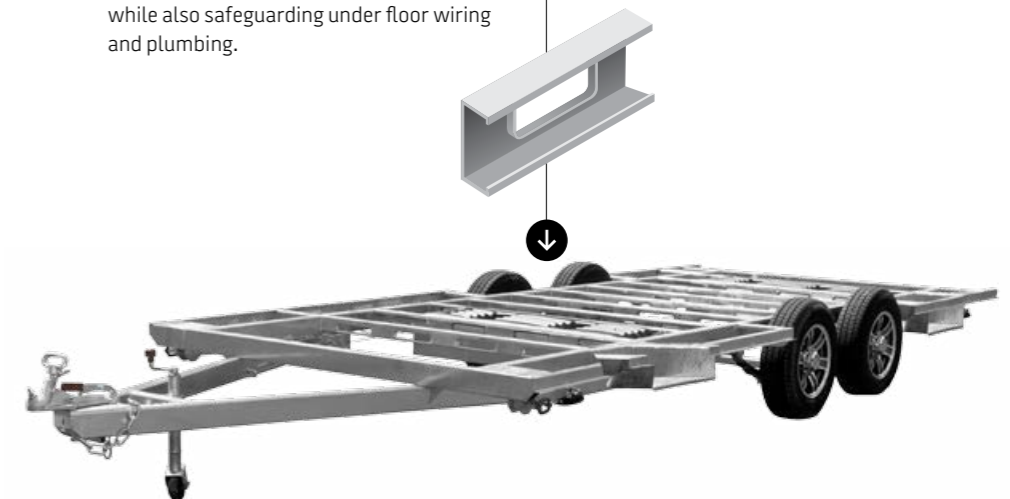


- 1 Hail and dent resistant, aerodynamic fibreglass exterior with a high gloss finish
- 2 External 3mm plywood board to increase structural strength
- 3 Aluminium frame – not timber – for extra strength and longevity, plus galvanised plating for secure fitment of internal furniture
- 4 Internal high-density polystyrene foam for superior insulation
- 5 Internal 3mm plywood board CE coated for maximum durability

ENDURANCE CHASSIS

A Caravan is only as strong as the base on which it's built, so we build our Endurance Chassis to last like no other. Lightweight yet super strong, it's hot dip galvanised for lifelong protection against corrosion, and features PSC member floor support, which better resist bending and compression, while also safeguarding under floor wiring and plumbing.

Jayco Pressed Steel C-Section (PSC)
PSC floor members are lighter than conventional box section steel, 300% stronger and resist bending by 175%.



JAYCO OUTBACK

Some of Australia's must-see destinations – the places you really want to explore – lie well beyond the bitumen. To help you see them, with all the comforts of home, each Jayco Toy Hauler is also available in an Outback version, complete with a higher ground clearance, and a range of high-strength componentry and specialised features, including:

- JTECH Independent Suspension
- 120W solar panel and regulator
- 150mm x 50mm rectangular hollow section chassis members
- 125mm x 50mm rectangular hollow section A-frame
- AL-KO off-road electric brake magnets
- AL-KO outback drop jacks
- Protective aluminium checker plate on sides
- 15-inch alloy wheels with 235/75R15 tyres

- Pull-out single step
- External 12V auxiliary plug
- External gas bayonet
- Jayco mud flaps

Opting for a Jayco Outback version is not a licence to bush bash. But its extra strength and enhanced specifications will free you to travel the country's unsealed roads safely and arrive relaxed. Even so, always take extra care and reduce your speed, especially when driving in unfamiliar territory. If in doubt, do what the 4WD experts do – use your Jayco as a base camp and head into rougher terrain without anything in tow.



Optional enhanced graphics pack shown

JTECH SUSPENSION

Purpose designed to complement the Jayco Endurance Chassis, JTECH Suspension replaces beam axles with individual stub axles, allowing each wheel to react independently to the road surface, while also lessening the chassis' unsprung weight. Delivering greater stability, a smoother ride, more precise handling and increased ground clearance without increased ride height, it makes towing easier and safer than ever before.

Precision manufactured using automotive processes to ensure exact fitment, JTECH Suspension is the product of two years' research and development at Jayco's Melbourne headquarters, and countless kilometres of real world testing across the best and worst of Australian second class roads. Its features include:

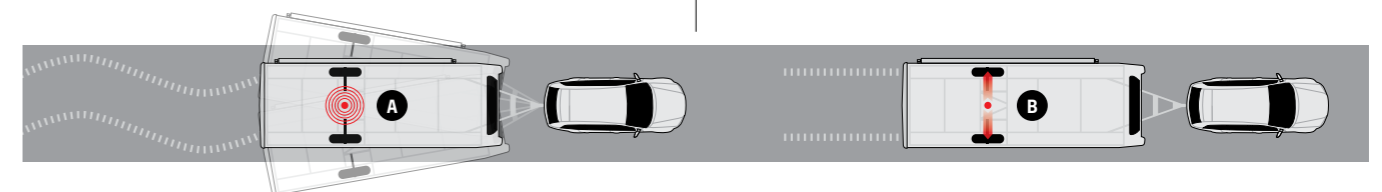
- Electrocoated surfaces for optimum protection against corrosion and stone chips
- AL-KO stub axles, bearings and brakes that are suitable for fitment of AL-KO Electronic Stability Control
- Large diameter, heavy-duty Pedders off-road shock absorbers and coil springs designed specifically for Jayco RVs and Australian conditions
- Aeon rubber springs inside each coil spring, producing a progressing rate when the suspension is compressed; and
- Toe-in and toe-out adjustment for wheel alignment



SAFETY FIRST, WITH AL-KO ELECTRONIC STABILITY CONTROL

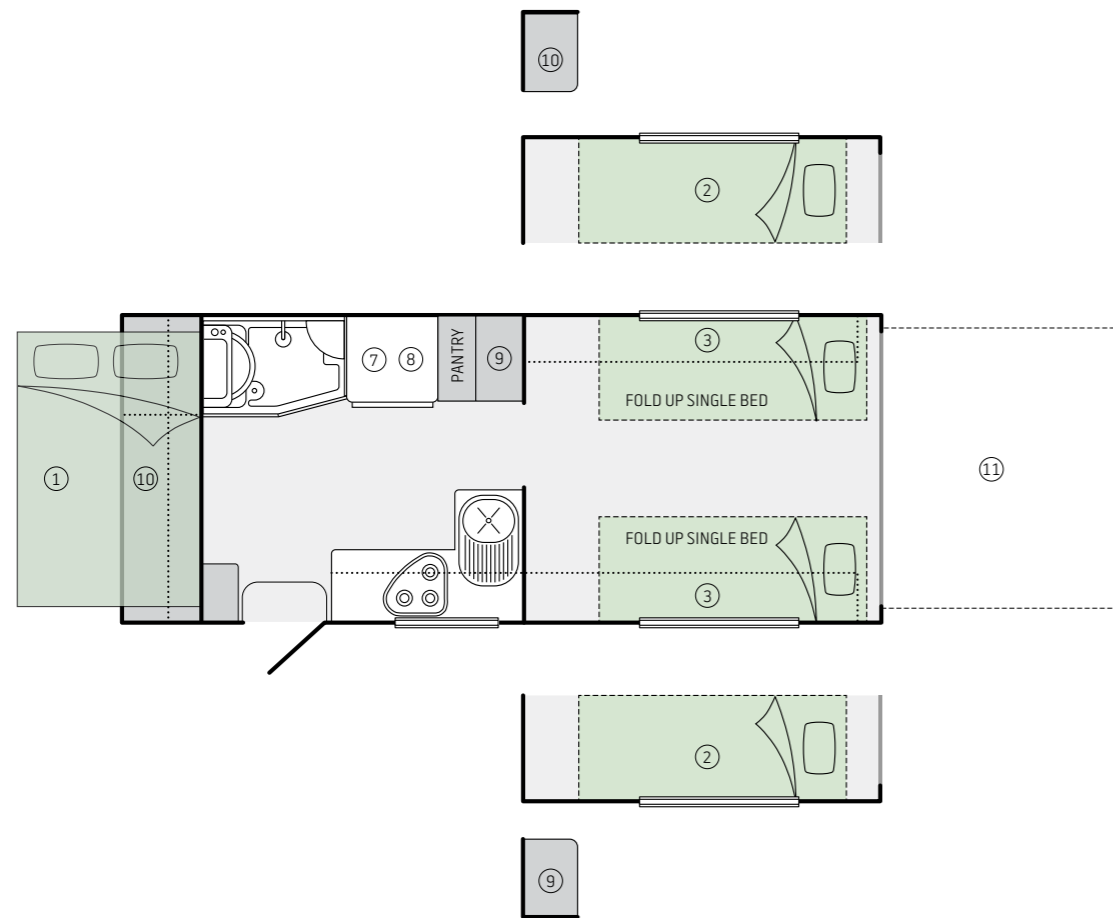


- A** Critical swerve or sway is detected.
- B** Electronic Stability Control partially applies the RV brakes. The caravan is pulled into line behind the tow vehicle. The sway is stopped and the caravan brakes are released.

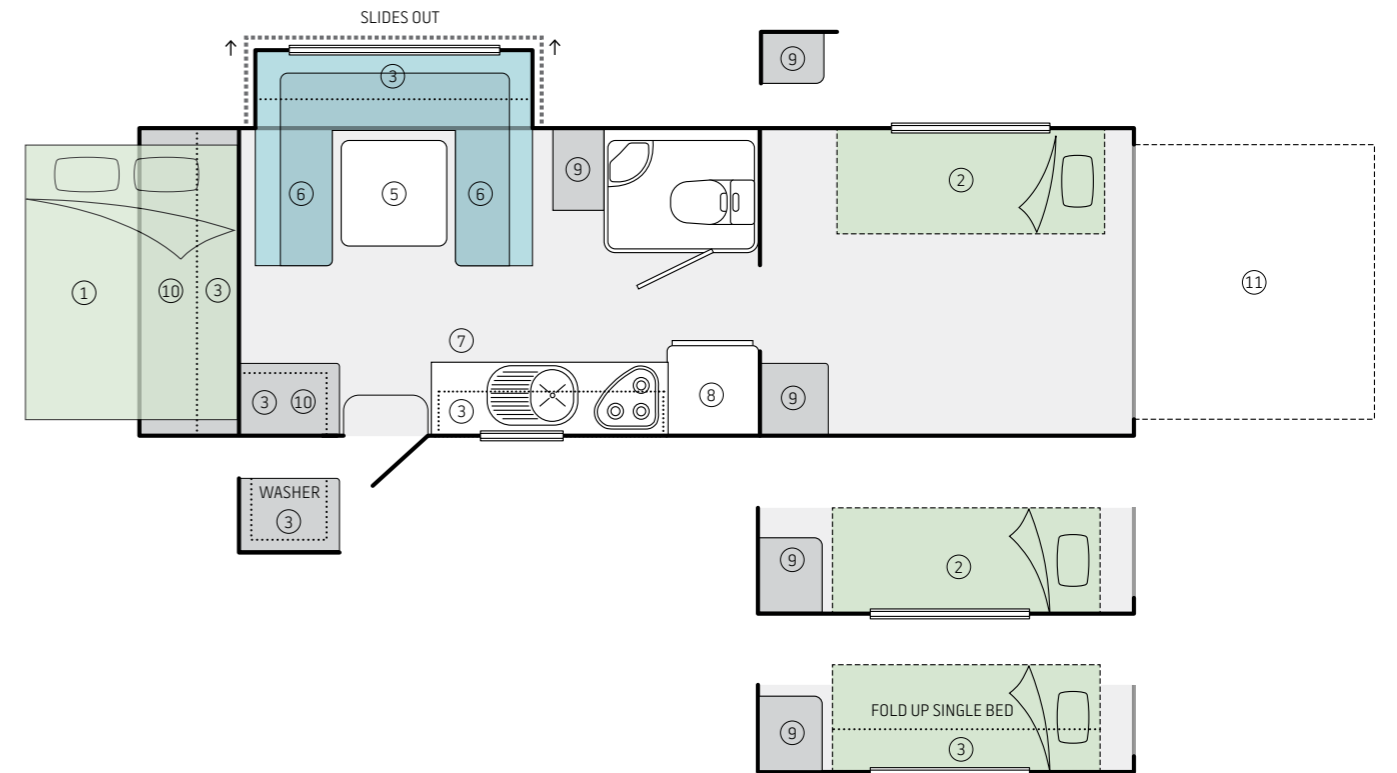


FLOOR PLANS

BASESTATION	19.58-1 TANDEM AXLE	OB OUTBACK
Body (L) (mm)	5,789	Tare weight (kg) 2,120
Width (inc awning) (mm)	2,470	Tow ball (kg) 188
Interior (L) (mm)	5,574	Travel length (mm) 7,134
Interior (H) (mm)	1,978	Travel height (mm) 2,895



BASESTATION	23.73-6 TANDEM AXLE	OB OUTBACK
Body (L) (mm)	7,370	Tare weight (kg) 2,600
Width (inc awning) (mm)	2,470	Tow ball (kg) 260
Interior (L) (mm)	7,125	Travel length (mm) 8,715
Interior (H) (mm)	1,978	Travel height (mm) 2,895



- Key**
- 1. Fold out bed
 - 2. Independent fold down bunk/bunks
 - 3. Overhead storage
 - 4. Seat
 - 5. Table
 - 6. Club Lounge
 - 7. Microwave
 - 8. Fridge
 - 9. Robe
 - 10. Storage
 - 11. Fold down ramp

Jayco allow an amount of additional weight (Carrying Load) for each individual unit manufactured above the initial manufactured Tare Weight of the unit. This 'Carrying Load' is for the customers individual weight requirements and can be made up of 'any' additional weight they propose to load the unit with, e.g. water, food, clothes etc. The standard unit carrying loads Jayco apply are: Basestation – 650kg. The towball and tare weight is only a guide and will change depending on accessories which are fitted to your van. It is advisable to discuss with your Jayco Representative. The standard approximate unit carrying loads Jayco apply are; Tandem Axle, internal shower units 650kg.

TRIMS

The freedom you'll enjoy with your Jayco begins before you even place your order. We offer a wide range of great looking, hard-wearing, easy-to-clean finishes, fabrics and soft furnishings in both contemporary and classic styles, for you to choose and coordinate as you wish.

Curtains



Elvis P



Triumph Ash (optional)

Joinery/floor vinyl



Rovere joinery



Boston Dark floor vinyl

Benchtop/splashback



Furlo (optional)

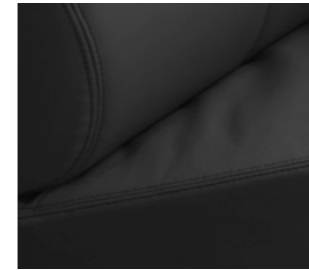


Talavera (optional)



Lucido Gloss splashback (standard)

Leather (optional)



Black



Gray



Mink



Orion



Sand Beige

Bolster/base cushion



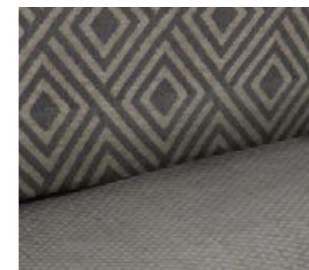
Casablanca Dove /
Obsession Warm Haze



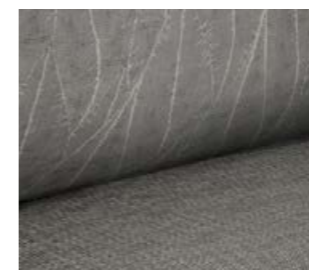
Thomas Eggplant / Aspire Eggplant



Eclipse / Bergen Noir



Bilson Granite / Byrne Granite



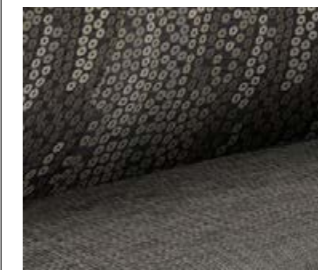
Palm Leaf Shark / Eternal Bungee



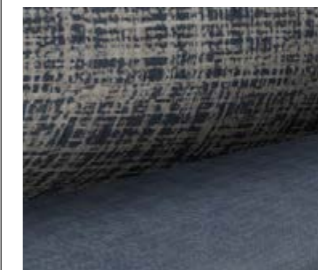
Kasual / Madrid



Arica / Zafira



Bubble / Eternal Bungee



Letto / Metro Slate



Jacob Indigo / Ardo Denim



Scura Natural / Eternal Bungee



Eternal Bungee / Eternal Bungee



Obsession Warm Haze /
Obsession Warm Haze



Aspire Eggplant / Aspire Eggplant

INTERIOR FEATURES

- Standard
- Optional
- Not available
- * Selected layouts

	Base Station	Outback
INTERIOR		
Battery – Setec 12V/240V management system	●	●
Battery – 100amp deep cycle	●	●
Bed converter*	○	○
Blind – rear roll down flyscreen	●	●
Control panel – JHub tablet display	○	○
Control panel – Coast to Coast	○	○
Drawers – Ezi glide pullout	●	●
Hatch roof 400mm x 400mm	●	●
Lights – reading 12V & fan to bed end	●	●
Lights – ceiling 12V LED 2 Tone wireless	●	●
Locks – positive to cupboard doors	●	●
Point – 12V cig socket	●	●
Power – 240V	●	●
Shower – modern design enclosed with exhaust fan*	●	●
Sink – stainless steel large bowl with Chop 'n' Serve board	●	●
Slideout – lounge bed 12V electric (23.73-6)	●	●
Splashbacks to kitchen area	●	●
Storage overheads with LED strip lights	●	●
Storage under seats (N/A 19.58-1)	●	●
Tap – mains pressure to sink	●	●
TV outlet	●	●
Water filtration system to sink	○	○
Windows – tinted double glazed Euro push style with in built roller blinds	●	●
Appliances		
Air conditioning – roof mounted	●	●
Cooktop – 4 burner grill or 4 burner oven with 1 x 240V element	○	○
Cooktop – Spinflo 3 burner	●	●
Fridge – Thetford 174L	●	●
Hot water service – 22L Gas/240V operation	●	●
Microwave	●	●
Rangehood – 12V LED light with twin fans	●	●
Satellite – Sphere dish	○	○
Stereo – Fusion CD/radio system with external speakers	○	○
TV Aerial – 12V power boosted	○	○
TV/DVD – Sphere LED 12V (19.5")	○	○
Comfort		
Dinette seating in genuine designer leather*	○	○
Dinette seating with durable designer fabric & non slip bases	●	●
Mattress – innerspring to front bed	●	●
Seat Foam – high resilience & antibacterial	●	●
Fitted bed sheets (Silver)	●	●

EXTERIOR

	Base Station	Outback
Awning – rollout with LED strip light	●	●
Awning walls*	○	○
Boot – side entry with large storage & LED light	●	●
Checkerplate – protective black side bottom panels	-	●
External entertainment unit	○	○
External TV point	●	●
Gas bayonet	○	●
Gas bottles – fixed (2 x 9kg)	●	●
Grey water tank	○	○
Jack – for spare wheel	●	●
Jacks – corner supports AL-KO drop	○	●
Jacks – corner supports window	●	-
Light – LED annexe	●	●
Light – LED door handle	●	●
Mudflaps – Jayco	○	●
Pebbleguard stone protection at front	●	●
Power – 12V weather proof cig socket	○	●
Power – 240V weather proof outlet	●	●
Shower – external including pop up tent	○	○
Solar system – 120 watt & regulator	○	●
Solar system – 150 watt & regulator	○	○
Solar wiring provision	●	-
Step – single pull out	-	●
Suspension – axle & leaf springs	●	-
Suspension – JTECH Suspension Independent	○	●
Table – external foldout	○	○
Tap – mains pressure to A-frame	●	●
Tent section – heavy duty canvas & Boltiflex	●	●
TV point	●	●
Water tank – 2 x 82L under floor	●	●
Water tank – additional 82L	○	○
Wheel – alloy spare	●	●
Wheels – 16" 245/70R16	-	○
Wheels – alloy with radial tyres	●	●
Wheels – nitrogen filled	●	●
Construction		
Chassis – Endurance hot dipped galvanised	●	●
Chassis – main members 6" x 2"	-	●
Furniture – Euro style with aluminium corner styles	●	●
Walls – fully insulated Toughframe, hail & dent resistant	●	●
Safety		
Brake magnets – AL-KO off-road	-	●
Brakes – electric	●	●
Brake unit – Tow Secure Emergency	●	●
Door – external triple lock with sep. security screen (Camec)	●	●
ESC – AL-KO Electronic Stability Control device	●	●
eZylevel levelling device	○	○
Fire extinguisher	●	●

CHOOSE JAYCO AND YOU'LL NEVER LOOK BACK

The freedom you experience when purchasing a Jayco extends beyond being able to travel where you want, when you want, for however long you want. There's also freedom from worry.

It comes from realising you've chosen the best value RV brand that money can buy, and that it will hold value better, for longer. It's also the peace of mind of knowing Jayco will always be there for you – through our comprehensive warranty, complimentary roadside assist service, or the convenience of Australia's largest RV dealer network.

Freedom from doubt, from second-guessing, from 'what if' – it's the feeling only an Australian-made Jayco can provide, and it's why our RVs are the first and only choice for so many.



NATIONWIDE SUPPORT 100+ SERVICE AND DEALER LOCATIONS

With more than 100 approved service centres nationwide, the Jayco support network is easily the best and most comprehensive in Australia. No matter where the road takes you, the expertise or spare parts you need are never far away.



3 YEARS' ROADSIDE ASSIST 24 HOURS A DAY, 365 DAYS OF THE YEAR

Every new Jayco RV comes with one feature that no other RV manufacturer can match— complimentary 24-hour Roadside Assist for three full years. No matter where you travel in Australia, as a Jayco owner, you're only ever a phone call away from the help you need in the event of an on road emergency. Please refer to jayco.com.au for more information.



WARRANTY PROGRAM 12 MONTHS' COMPREHENSIVE COVERAGE

The Jayco 12-month warranty is our promise that the RV you purchase will be free from poor workmanship and material defects. Regarded as the industry benchmark, it lets you relax on your travels, safe in the knowledge that Australia's largest RV dealer and service network has you covered.



BETTER VALUE MORE FEATURES FOR LESS

Every model Jayco comes equipped with standard features that other brands offer only as options. Buying power is the key—nearly one in two RVs on Australian roads carries our name. We're also the nation's most efficient RV manufacturer. By passing on the benefits of these production advantages, we ensure Jayco remains Australia's best value for money RV.



GREAT RESALE VALUE A SMARTER INVESTMENT IN THE LONG RUN

As you travel life's journey your needs may change. Your growing family may outgrow your current RV. Or you may retire and want to upgrade before embarking on the big trip you've always dreamed about. Whatever your reason for selling, you'll find a Jayco holds its value.

JAYCO.COM.AU 1300 JAYCO RV



To be the best, you need to work with the best



VISIT YOUR JAYCO DEALER: